



<b>One destination. Limitless experiences.</b>	<b>4-5</b>
<b>Loads to feel good about</b>	<b>6-7</b>
<b>Details that make your ABI</b>	<b>8-9</b>
<b>Building the best experiences</b>	<b>10-11</b>
<b>Our 2024 Collection</b>	<b>12-83</b>
The Coworth	12-17
The Keswick	18-23
The Wimbledon	24-29
The St David	30-35
The Beverley	36-41
The Derwent	42-47
The Windermere	48-53
The Ingleton	54-59
The Langdale	60-65
The Ambleside	66-71
The Beaumont Lodge	72-77
The Westwood Lodge	78-83
<b>Key features &amp; specifications</b>	<b>84-87</b>

# One destination. Limitless experiences.

Don't be fooled by this island's size. It might seem small. You might think a Great British getaway means only one thing - sandy sandwiches and soggy summers. The truth is, this land holds many surprising experiences. So, however you like to holiday, the UK will not disappoint.

Adventures here are so varied, that not even two coastlines are the same. Some come with castles and vast, almost-deserted sands. Others are shingly and sheltered in steep rocky coves. And that's just how different a beach holiday here can be. We've not yet started to explore Great Britain's forests, rivers, mountains and market towns.

From Land's End to Dunnet Head, the Great British adventure is ever-changing,

but always exciting. Compare Ben Nevis' views to vistas of Cambridgeshire's Fens. Like apples and pears, they're strikingly different, but equally beautiful. Laid-back and lazy or action-packed adventuring holidays, filled with very little or lots and lots, you can find it all here. Your adventure can be enjoyed with a Scottish, Irish, Welsh or English twist.

Choice here is overwhelming, and the decision on what your Great British

getaway will be is made all the trickier because of it. But one thing is never in doubt, when the sun shines, nothing beats a Great British escape. Sometimes you can mistake this beautiful isle for somewhere else entirely.

*"From Land's End to Dunnet Head, the Great British adventure is ever-changing, but always exciting."*

# Loads to feel good about.

On top of all the little things we do to make you feel good every time you step inside your ABI, we're also doing good beyond your holiday home. From helping charities, to looking after our planet and our people. Hopefully, it'll put even more of a smile on your face.

## Doing good for the planet



From how thermally efficient our holiday homes are, to offsetting carbon, even how we make this very brochure, we've got our green hat on. We are committed to doing our bit to protect this planet. Hopefully for staycations for generations to come.



## Good deeds for charities

Every year our ABI team pick four charities local to our East Yorkshire home for us to support.

Last year we helped Yorkshire Air Ambulance fund the launch of their new helicopter. We donated to Candlelighters, helping them support children and families living with cancer. The Neighbourhood Network were able to kit out new volunteers for their litter picks, thanks to us. And our donations meant Hull 4 Heroes were able to give ex-servicemen and women photography lessons.

This year, we're incredibly proud and pleased to be able to support a whole raft of new charities that are close to us.

## Four new worthy causes

This year our team have picked **Aim Higher**, **Abbie's Fund**, **Dan Kitching35 Foundation** and **Dove House Hospice**.

All four of these charities will receive an equal donation for every holiday home built. This will support a range of good work, from helping to support local people with cancer, to creating better opportunities for those with Autism.

## Offsetting the carbon of every ABI build



For every ABI we build, we plant a tree in the UK and support Carbon Neutral Organisation projects around the world, we aim to reduce the impact of carbon emissions generated during our production process.

The trees we plant here in the UK, in conjunction with schools across the country, offset the carbon created by manufacturing each holiday home over the tree's lifetime.

The other projects we support around the world immediately offset any carbon created when we build your ABI.



## A greener brochure

Every page you'll flick in this brochure is a piece of carbon balanced paper.

That means the emissions created in the process of making the paper have been offset (or balanced) through the World Land Trust. Every page is a good'un, in a green sense.

## Good to our people

We are the first holiday home manufacturer in the UK to become an accredited Living Wage Employer.



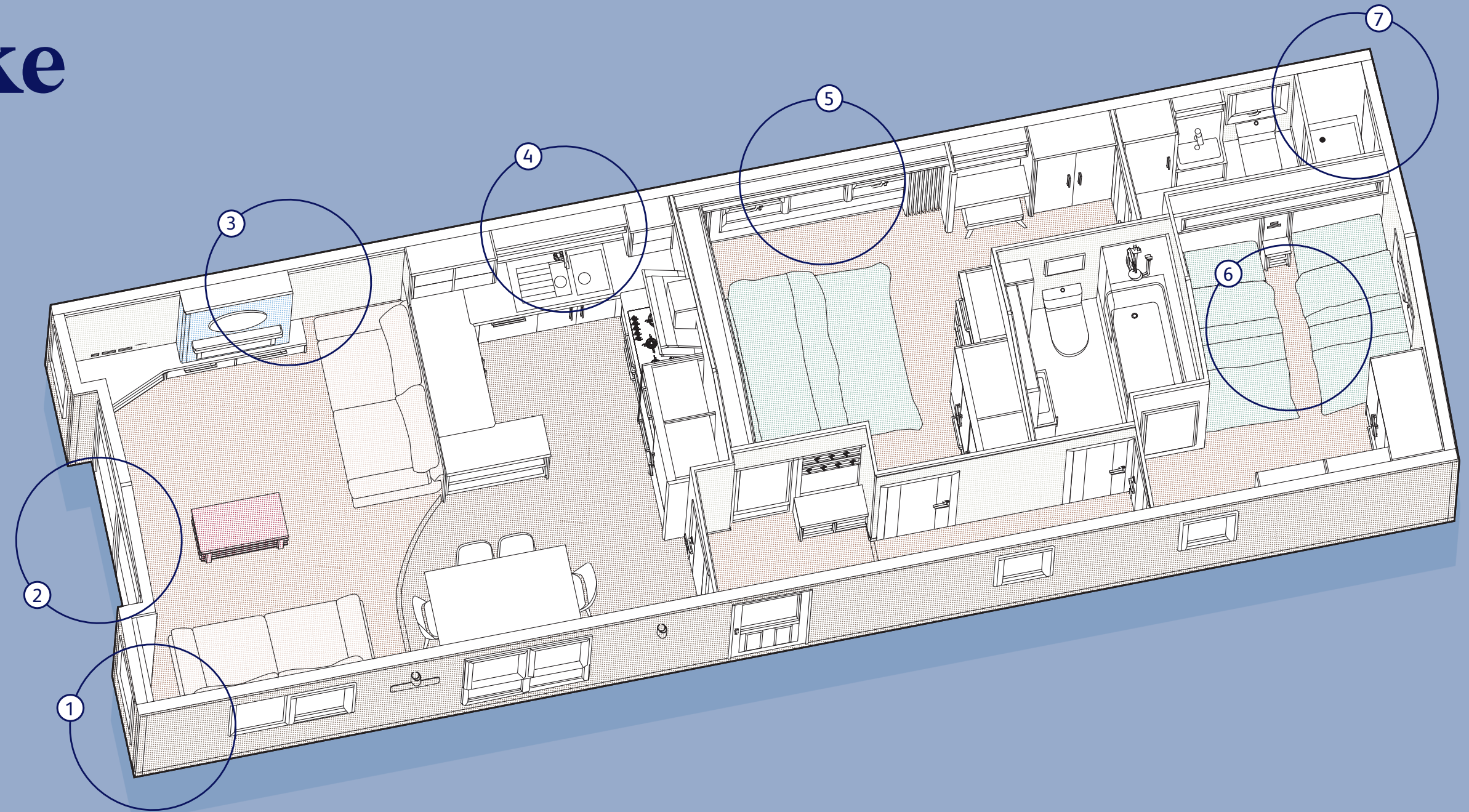
## Thermally efficient holidaying

We pride ourselves on creating holiday homes that have a high thermal performance, and not just for your comfort. Our technical experts dedicate their efforts to making your holiday home as thermally efficient as possible, which is good news for the environment too.

# Details that make your ABI.

We believe it's little things, details that are small, simple, forgettable even, that make an ABI experience special. Those little details actually make a big difference because they're so thoughtfully conceived.

We really think about how people stay, play and holiday in our holiday homes. By thinking about the stay, from the moment you wake to the second your head touches that pillow, we know the little things that really make your experience.



## 1 Cosy stays

'Low E' PVCu Thermaglass double glazing, 100mm roof insulation, central heating and electric fires, so your ABI stay is always a cosy experience, even in winter.

## 2 The best views

Patio doors, panoramic glass fronts and large windows that bring the great outdoors experience right into your ABI.

## 3 Little luxuries

USB sockets and Bluetooth sound systems in some holiday homes. These are just a few of the little touches we add that make your ABI a more luxurious experience.

## 4 Day-to-day details

Well-planned kitchens and smart storage solutions, like walk-in wardrobes and handy hooks, there's no let-up in natty design details that make the everyday living experience easy.

## 5 Eco-friendly ideas

Energy saving innovations, like LED bulbs and 'Low E' PVCu Thermaglass double glazing, so that your experience is guilt-free, environmentally speaking.

## 6 Great nights

Mattresses made to the high standards that you'd find at home and deluxe pocket sprung upgrades, for a sleep experience you'll love.

## 7 Homely touches

7ft high walls, vaulted ceilings, as well as little details you may overlook, like soft closers and cosy carpet underlay, it all makes your holiday a home-from-home experience.



FACTORY  
Approved






# Building the best experiences.



**No end of thoughtful ideas, high quality materials, hours and hours of dedicated craft, rigorous testing and checks - that's what goes into building your holiday home.**

From first sketches to final checks, every member of our talented team is dedicated to giving you a place where we hope you'll enjoy many a happy experience.

*"Our highly skilled, passionate Craft Technicians are the ones who bring these beautiful drawings to life."*

 <p><b>Inspiration &amp; design</b></p>	 <p><b>Prototype build</b></p>	 <p><b>Technical detailing</b></p>	 <p><b>Production build</b></p>	 <p><b>Quality inspection</b></p>
<p>Our in-house Designers take the latest trends, technical innovations and ABI owners' feedback to create concepts and 3D virtual models for each holiday home's colour scheme, layout and styling.</p>	<p>Our experienced Engineers faithfully recreate each virtual model, from its layout to the fixtures, in a full-sized prototype so that we can check and perfect every detail before it goes into production.</p>	<p>After the prototype has been tried, tested and finalised, our expert Draughting Technicians translate each detail into precise drawings, ensuring your ABI is built to our exacting standards.</p>	<p>Our highly skilled, passionate Craft Technicians are the ones who bring these beautiful drawings to life. They make every holiday home by hand, in our workshop in East Yorkshire.</p>	<p>Before you can start enjoying your holiday home, our Quality Inspectors will put it through some rigorous tests. Only if it meets our exceptional standards does it get the ABI seal of approval.</p>

**No matter which ABI you choose, all of these features are included as standard:**

- ✓ 100mm insulation in roof
- ✓ Upgraded external walls with 50mm insulation (except The Coworth)
- ✓ Domestic gutters and downpipes
- ✓ Domestic style internal doors
- ✓ Domestic mattresses (3 times more filling and more durable covering)
- ✓ Crib 5 mattresses in bedrooms
- ✓ Domestic twin cavity oven with electric ignition (range oven in The Westwood Lodge)
- ✓ Electric fire (except The Coworth)
- ✓ Thermostatic shower mixer valve
- ✓ Underlay in carpeted area (except The Coworth bedrooms)
- ✓ Low energy bulbs throughout and LED bulbs in all spotlights
- ✓ Lined curtains (except The Coworth)
- ✓ Pull out bed in lounge
- ✓ Steel pantile roof
- ✓ 10 year smoke detector
- ✓ Carbon monoxide detector x2
- ✓ Fire extinguisher
- ✓ Escape windows

You can make your ABI even more special by adding further options, see pages 84 & 85.





Shows Deluxe Pack and optional front sliding doors, see page 17

# The Coworth

There's everything you need for relaxing here. A sofa so soft and chunky it's impossible to resist. A kitchen-dining layout made for real living. Designer details, like matt black handles. This is relaxation without compromise.



Shows Deluxe Pack, see page 17



Shows Deluxe Pack, see page 17



Shows Deluxe Pack, see page 17



Shows Deluxe Pack, see page 17



Shows Deluxe Pack, see page 17



*Relaxation with all of home's comforts*

Please note: Some items featured in this photography are scene-setting props or optional extras, not included in your purchase. Please speak to your park or dealership or refer to the 'all this included' section for this holiday home.



Shows Deluxe Pack, see page 17

## Highlights:

- Spacious family home
- 2' 6" single beds in twin room (12ft 2 bedroom models only)
- Option to upgrade to Deluxe Pack
- Updated colour scheme for 2024



Shows optional front sliding doors, see page 17

# The Coworth

Take your pick of eight different models. Whichever one you choose, rest assured it'll have everything you need for an uncompromisingly relaxing break.



For more information and to take a virtual tour, visit [www.abiuk.co.uk](http://www.abiuk.co.uk)

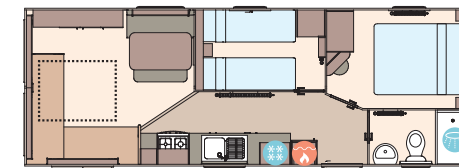
### All this included

- ✓ Matt finish Champagne aluminium cladding
- ✓ Fixed dinette seating
- ✓ Carpet underlay in lounge
- ✓ Scatter cushions in lounge
- ✓ King size bed in master bedroom (except all 10ft models and 32ft x 12ft 2 bedroom model)
- ✓ 2' 6" single beds in twin room (12ft 2 bedroom models only)
- ✓ Separate en suite (32ft x 12ft models upwards)

### Add any of these

- Deluxe Pack (available on 12ft models)
- Fully galvanised chassis
- 'Low E' PVCu Thermaglass double glazing
- Integrated microwave oven
- Winter premium pack

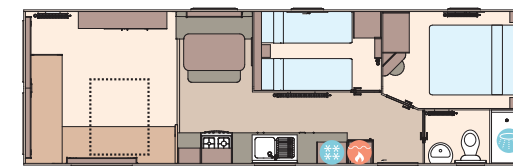
- Winter electric pack
- Front french doors or front sliding doors (available on 32ft x 12ft model, both 36ft x 12ft models and 39ft x 12ft model)
- Free-standing fridge
- Free-standing or integrated fridge freezer
- Externally vented powered cooker hood
- Bathroom extractor fans
- Lift-up bed in master bedroom
- Space saver bed for twin room
- Plain duvet covers and pillowcases
- Voiles throughout
- USB socket in lounge



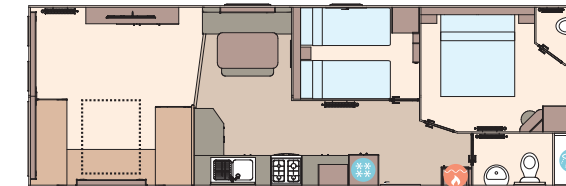
The Coworth 28ft x 10ft x 2 bedroom



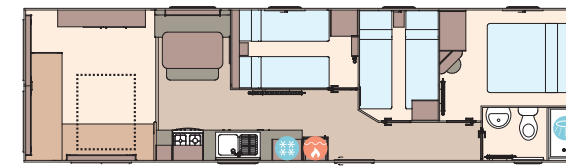
The Coworth 32ft x 12ft x 2 bedroom



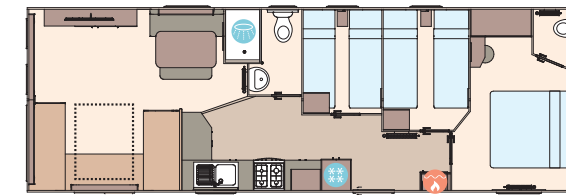
The Coworth 32ft x 10ft x 2 bedroom



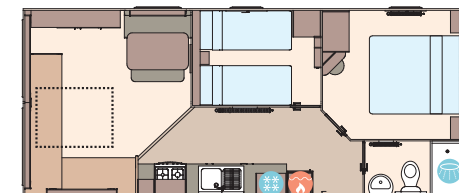
The Coworth 36ft x 12ft x 2 bedroom



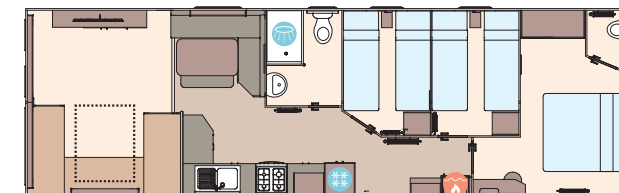
The Coworth 36ft x 10ft x 3 bedroom



The Coworth 36ft x 12ft x 3 bedroom



The Coworth 28ft x 12ft x 2 bedroom



The Coworth 39ft x 12ft x 3 bedroom

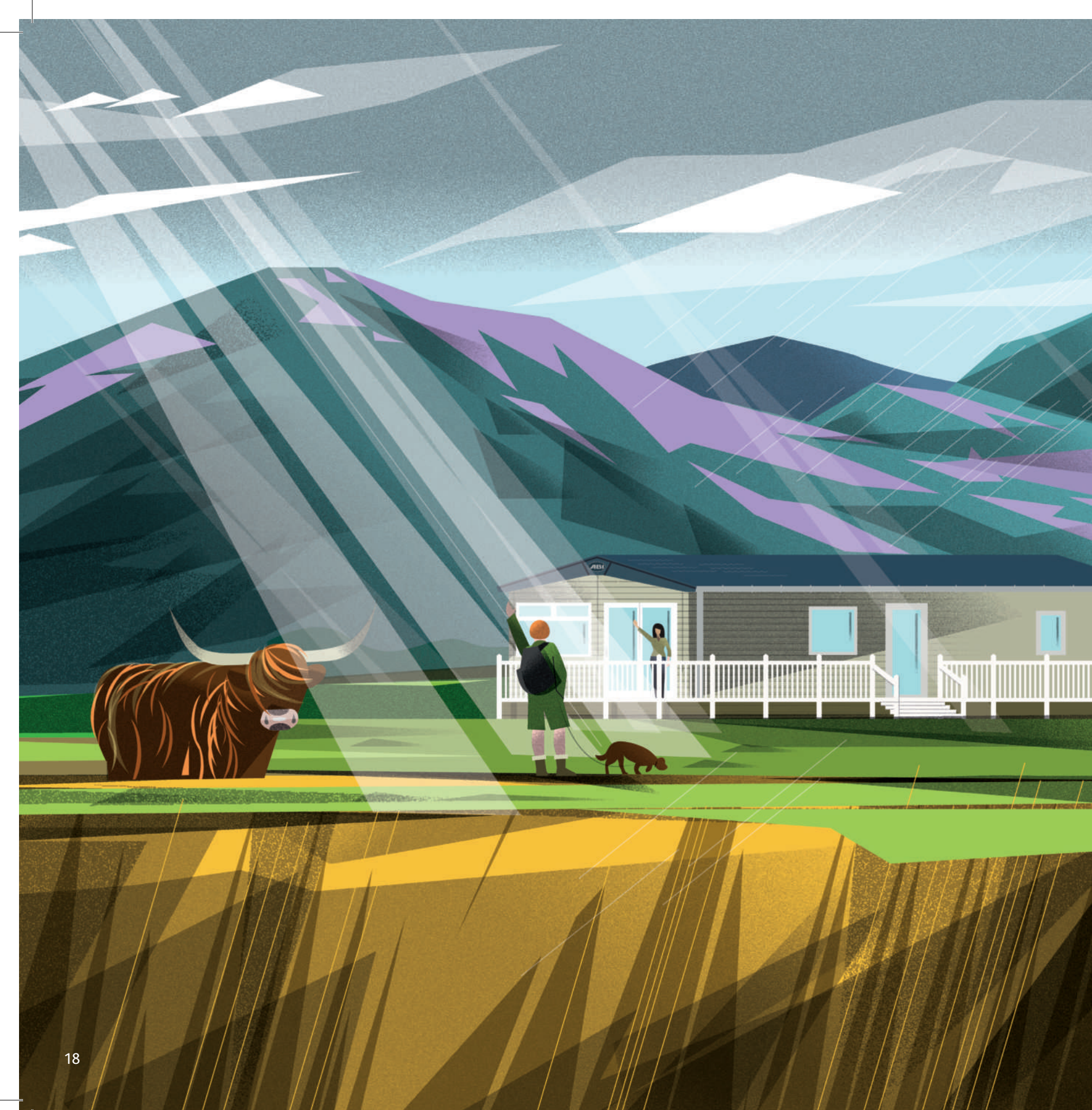
KEY: Water heater Shower Fridge/Freezer Front pull out bed

### Included in Deluxe Pack (over standard)

- Fully galvanised chassis
- Curtains on poles
- Carpet underlay throughout
- Upgraded seating including arms and fabric kickboards
- 2 way switching in master bedroom
- Extra sockets in bedrooms
- Full height glass hob splashback
- Integrated microwave oven
- Free-standing fridge freezer
- Bathroom extractor fans
- Externally vented powered cooker hood
- Kitchen upstands
- Wardrobe doors
- Upgraded TV surround

OPTIONAL  
**WINTER PACKS**  
See Page 86





Shows L-shaped dinette option, see page 23

# The Keswick

Eat, drink, unwind and switch effortlessly from one kind of living to another here. Easy come, easy go dining, a sofa thoughtfully refined for maximum comfort, a movable coffee table, nothing throws your flow.



Shows L-shaped dinette option and optional front sliding doors, see page 23



*Underbed storage for clutter-free slumber*

Please note: Some items featured in this photography are scene-setting props or optional extras, not included in your purchase. Please speak to your park or dealership or refer to the 'all this included' section for this holiday home.





Shows L-shaped dinette option, see page 23

# The Keswick

You're spoilt for choice with eight different models to choose from. Pick the easy come, easy go open plan layout that'll work for your kind of holiday.



For more information and to take a virtual tour, visit [www.abiuk.co.uk](http://www.abiuk.co.uk)

### All this included

- ✓ Matt finish Champagne aluminium cladding
- ✓ Carpet underlay throughout
- ✓ Electric fire
- ✓ Scatter cushions in lounge
- ✓ Fixed dinette seating
- ✓ Externally vented powered cooker hood
- ✓ Soft-close hinges on doors and drawers in kitchen
- ✓ King size bed in master bedroom (except 28ft models and 36ft/39ft x 12ft 3 bedroom models)
- ✓ Bathroom extractor fans
- ✓ Separate second toilet (32ft x 12ft models and up)
- ✓ Shaped front bay
- ✓ USB socket in kitchen
- ✓ Coffee table (on specific models)
- ✓ Fabric headboards to all bedrooms
- ✓ Overbed lockers in all bedrooms
- ✓ Lift-up bed in master bedroom

### Add any of these

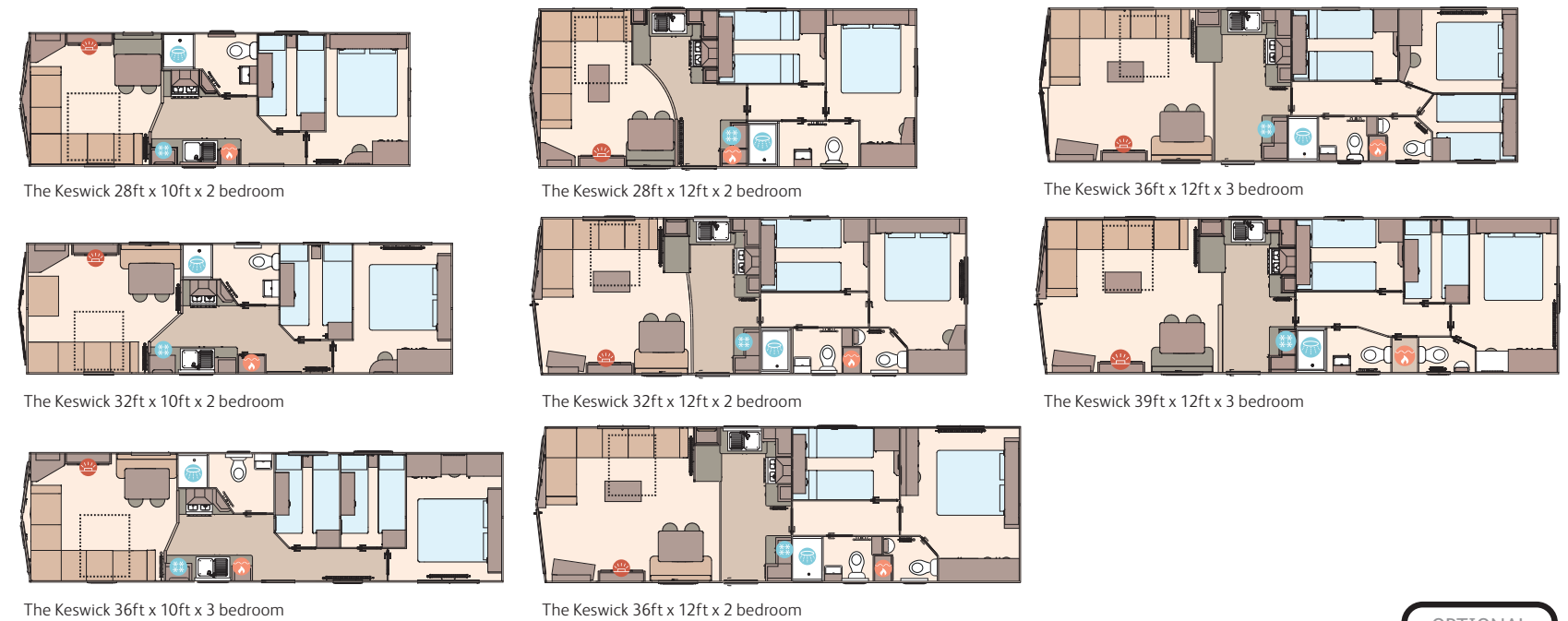
- Fully galvanised chassis
- 'Low E' PVCu Thermaglass double glazing
- Winter premium pack
- Winter electric pack
- Front French doors or front sliding doors (available on 32ft x 12ft model, both 36ft x 12ft models and 39ft x 12ft model)
- Free-standing dining table and chairs
- Free-standing fridge
- Free-standing or integrated fridge freezer
- Integrated microwave oven
- L-shaped dinette (specific models)
- Space saver bed for twin room
- Plain duvet covers and pillowcases
- Voiles throughout



Shows optional front sliding doors, see page 23

## Highlights:

- Stylishly designed holiday home for the whole family
- Low energy lighting
- Optional front doors on some models
- Updated colour scheme for 2024



KEY: Fire Water heater Shower Fridge/Freezer Front pull out bed

OPTIONAL WINTER PACKS See Page 86



Shows optional armchairs, see page 29

# The Wimbledon

Settle into traditional tranquillity. Earthy tones with accents of yellow and orange, the vibe is bright without being brash. From chrome cup handles and pretty floral patterns, to delicate light fittings, every dainty detail adds up to one cute country stay.



Shows optional armchairs and optional front sliding doors, see page 29



*A cosy, farmhouse feel*

Please note: Some items featured in this photography are scene-setting props or optional extras, not included in your purchase. Please speak to your park or dealership or refer to the 'all this included' section for this holiday home.



Shows optional armchairs, see page 29

# The Wimbledon

This cosy country feeling holiday home comes in three different layouts, so if you've fallen for its charms, simply pick the model that works for you.



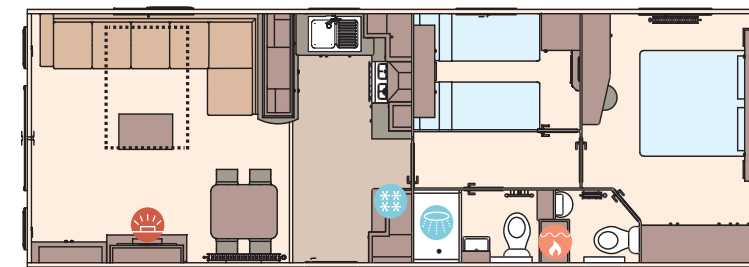
For more information and to take a virtual tour, visit [www.abiuk.co.uk](http://www.abiuk.co.uk)

## All this included

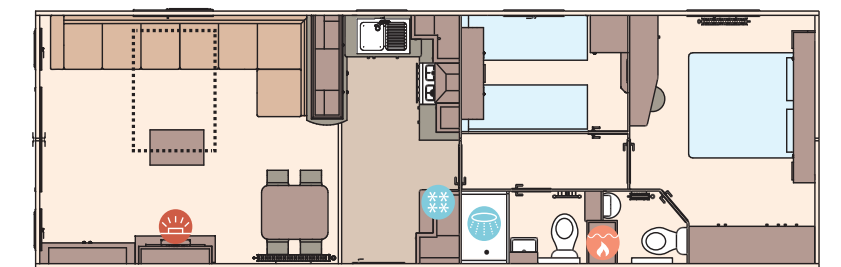
- ✓ Matt finish Champagne aluminium cladding
- ✓ Feature electric fire
- ✓ Carpet underlay throughout
- ✓ Stylish light fittings with low energy bulbs
- ✓ Free-standing dining table and chairs
- ✓ Externally vented powered cooker hood
- ✓ 40mm worktops
- ✓ Soft-close hinges on doors and drawers in kitchen
- ✓ Lift-up bed in master bedroom
- ✓ King size bed in master bedroom in all models
- ✓ TV point in master bedroom and one twin room
- ✓ USB sockets in all bedrooms
- ✓ USB socket in lounge
- ✓ Separate en suite toilet
- ✓ Shaver socket
- ✓ Bathroom extractor fans
- ✓ Coat hooks in all bathrooms
- ✓ Shaker style kitchen doors

## Add any of these

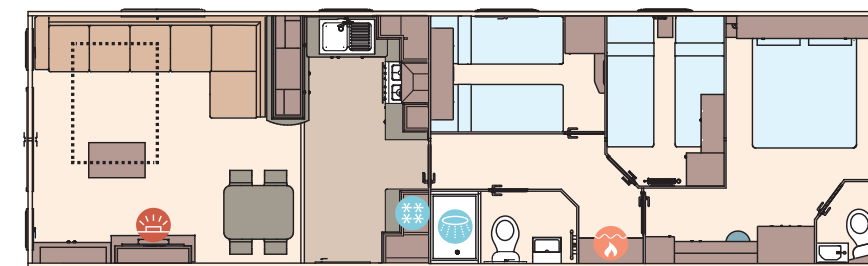
- Fully galvanised chassis
- 'Low E' PVCu Thermaglass double glazing
- Winter premium pack
- Winter electric pack
- Space saver bed for twin room
- Free-standing fridge
- Free-standing or integrated fridge freezer
- Integrated microwave oven
- 'Exclusive' pocket sprung mattresses
- Bluetooth sound system in lounge
- Scatter cushions in lounge
- Reduced L-shaped seating and additional two armchairs (38ft x 12ft 2 bedroom model only)
- Voiles throughout
- Plain duvet covers and pillowcases
- Exterior door options available



The Wimbledon 36ft x 12ft x 2 bedroom



The Wimbledon 38ft x 12ft x 2 bedroom



The Wimbledon 40ft x 12ft x 3 bedroom

### KEY:

- Fire
- Water heater
- Shower
- Fridge/Freezer
- Front pull out bed

## Highlights:

- Beautifully appointed shaker style kitchen
- Optional patio doors
- Updated colour scheme for 2024



Shows optional front French doors, see page 29

OPTIONAL  
WINTER  
PACKS  
See Page 86



# The St David

Entertain everyone, with statement kitchen lighting, chunky standout counters and an eye-catching and view-framing sink. Not to mention added style notes in textural fabrics throughout. You won't want to keep this all-new space to yourself.



*Hasting has never been easier*

Please note: Some items featured in this photography are scene-setting props or optional extras, not included in your purchase. Please speak to your park or dealership or refer to the 'all this included' section for this holiday home.





Shows optional full front sliding doors, see page 35

# The St David

If this all-new holiday home designed for entertaining is your cup of tea, then it's time to pick the layout you love - there are three for you to choose from.



For more information and to take a virtual tour, visit [www.abiuk.co.uk](http://www.abiuk.co.uk)

### All this included

- ✓ Matt finish Champagne aluminium cladding
- ✓ Carpet underlay throughout
- ✓ Stylish light fittings with low energy bulbs
- ✓ Electric fire
- ✓ USB socket in lounge
- ✓ Additional sockets next to TV point in lounge
- ✓ Free-standing dining table and chairs
- ✓ Externally vented powered cooker hood
- ✓ 40mm worktops
- ✓ Soft-close hinges on doors and drawers in kitchen
- ✓ Lift-up bed in master bedroom
- ✓ King size bed in master bedroom (2 bedroom models only)
- ✓ TV point in master bedroom and one twin room
- ✓ USB sockets in all bedrooms
- ✓ En suite shower (38ft x 12ft 2 bedroom model only)
- ✓ Bathroom extractor fans
- ✓ Separate en suite toilet
- ✓ Coat hooks in all bathrooms
- ✓ Composite kitchen sink
- ✓ Coffee table with cube stool

### Add any of these

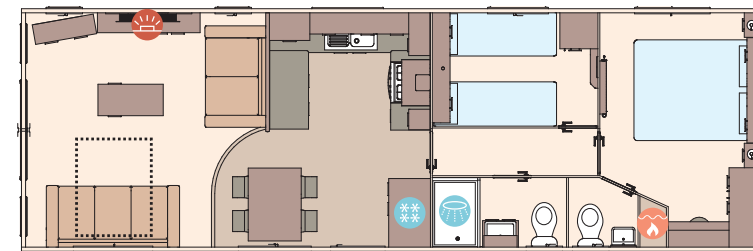
- Fully galvanised chassis
- 'Low E' PVCu Thermaglass double glazing
- Winter premium pack
- Winter electric pack
- Voiles throughout
- Free-standing fridge
- Free-standing or integrated fridge freezer
- Integrated microwave oven
- Integrated dishwasher or washing machine
- Plain duvet covers and pillowcases
- Scatter cushions in lounge
- Exterior door options available
- Bluetooth sound system in lounge
- 'Exclusive' pocket sprung mattresses
- Space saver bed (twin room only)



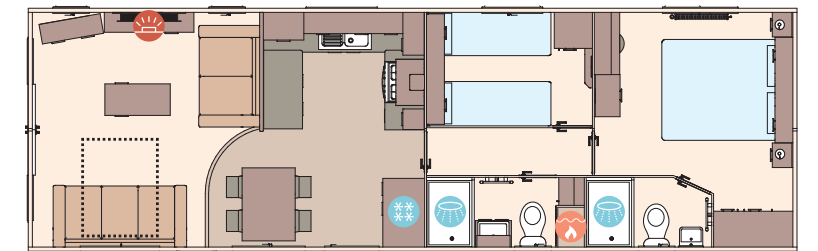
Shows optional full front sliding doors, see page 35

## Highlights:

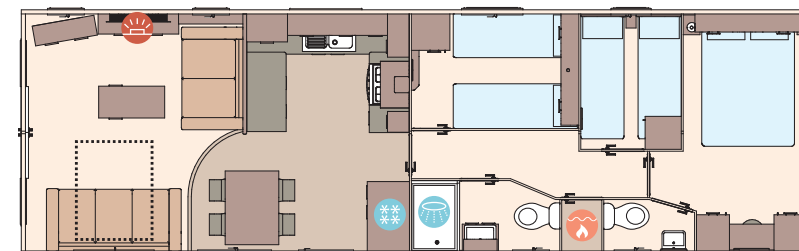
- Brand new model for 2024
- Spacious family home
- All models include en suite toilet
- En suite with shower in the 38ft x 12ft 2 bedroom model
- Home-from-home styling



The St David 37ft x 12ft x 2 bedroom



The St David 38ft x 12ft x 2 bedroom

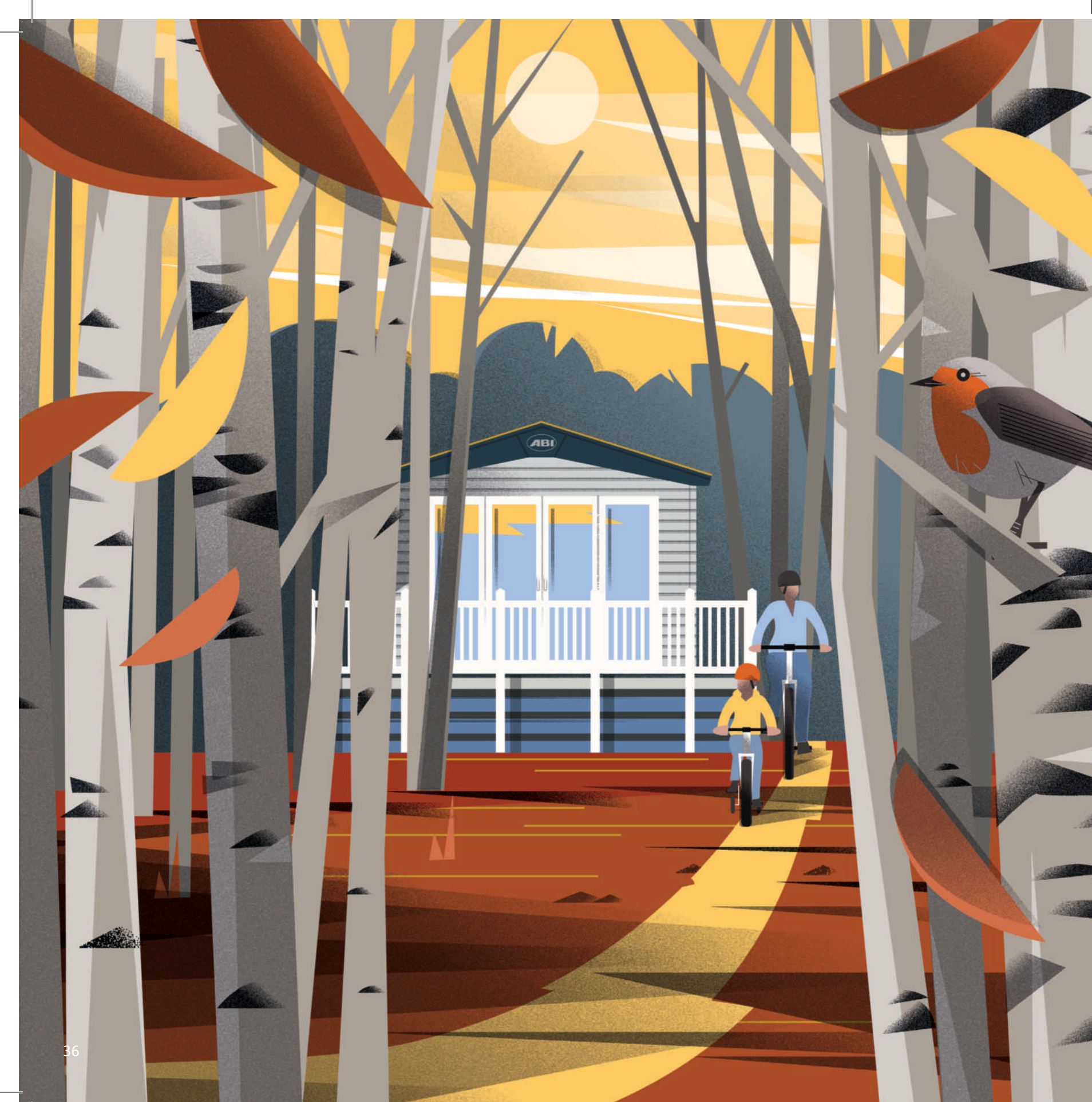


The St David 39ft x 12ft x 3 bedroom

### KEY:

- Fire
- Water heater
- Shower
- Fridge/Freezer
- Front pull out bed

OPTIONAL  
WINTER  
PACKS  
See Page 86



Shows optional full front sliding doors, see page 41

# The Beverley

Holiday like you're in a boutique spa. Panelled headboards, hairpin legged tables and matt black finishes all ooze hotel chic. And with an expansive en suite tub, dedicated dressing area, plus extra deep sofas, luxury relaxation comes easy here.



*Savour slow mornings in style*

Please note: Some items featured in this photography are scene-setting props or optional extras, not included in your purchase. Please speak to your park or dealership or refer to the 'all this included' section for this holiday home.



Shows optional full front sliding doors, see page 41

# The Beverley

This stylish holiday home packed with hotel chic design details is available in three different layouts. Simply choose the model that suits you.



For more information and to take a virtual tour, visit [www.abiuk.co.uk](http://www.abiuk.co.uk)

### All this included

- ✓ Matt finish Chateaux grey aluminium cladding
- ✓ Carpet underlay throughout
- ✓ Stylish light fittings with low energy bulbs
- ✓ Electric fire
- ✓ USB socket in lounge
- ✓ Additional sockets next to TV point in lounge
- ✓ Free-standing dining table and chairs
- ✓ Externally vented powered cooker hood
- ✓ 40mm worktops
- ✓ Soft-close hinges on doors and drawers in kitchen
- ✓ Lift-up bed in master bedroom
- ✓ King size bed in master bedroom (2 bedroom models only)
- ✓ TV point in master bedroom and one twin room
- ✓ USB sockets in all bedrooms
- ✓ En suite with domestic style bath (39ft x 12ft 2 bedroom only)
- ✓ Shaver socket
- ✓ Bathroom extractor fans
- ✓ Separate en suite toilet
- ✓ Coat hooks in all bathrooms
- ✓ Composite kitchen sink
- ✓ Pictures above bed in master bedroom
- ✓ Coffee table with cube stool

### Add any of these

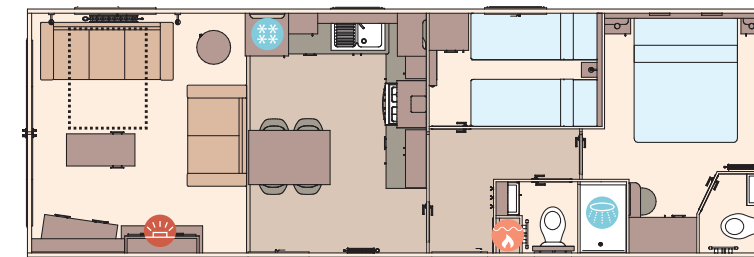
- Fully galvanised chassis
- 'Low E' PVCu Thermaglass double glazing
- Winter premium pack
- Winter electric pack
- Voiles throughout
- Free-standing fridge
- Free-standing or integrated fridge freezer
- Integrated microwave oven
- Integrated dishwasher or washing machine
- Plain duvet covers and pillowcases
- Bed runner in master bedroom
- Scatter cushions in lounge
- Exterior door options available
- Bluetooth sound system in lounge
- 'Exclusive' pocket sprung mattresses
- Space saver bed (twin room only)

## Highlights:

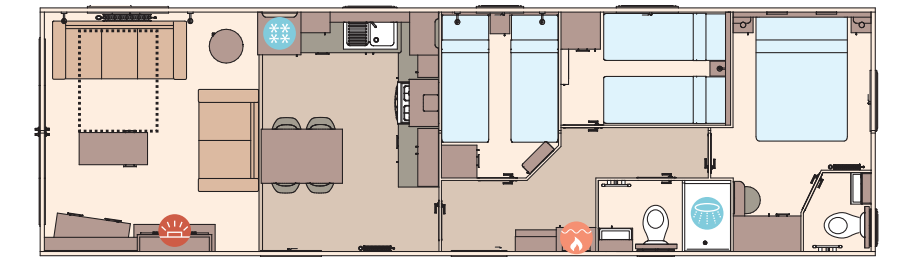
- Comfortable free-standing sofas
- Optional fully glazed front with sliding doors
- En suite with domestic bath (39ft x 12ft 2 bedroom model only)
- Home-from-home comforts throughout
- Updated layout and colour scheme for 2024



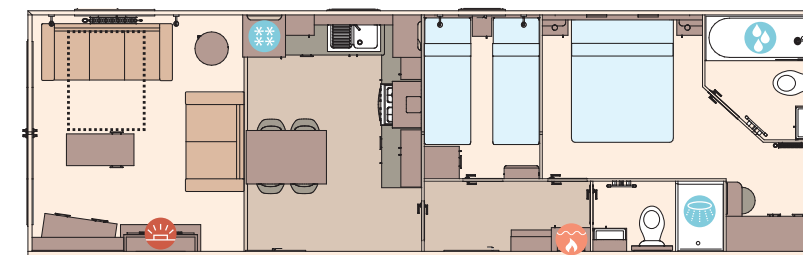
Shows optional full front sliding doors, see page 41



The Beverley 36ft x 12ft x 2 bedroom



The Beverley 40ft x 12ft x 3 bedroom

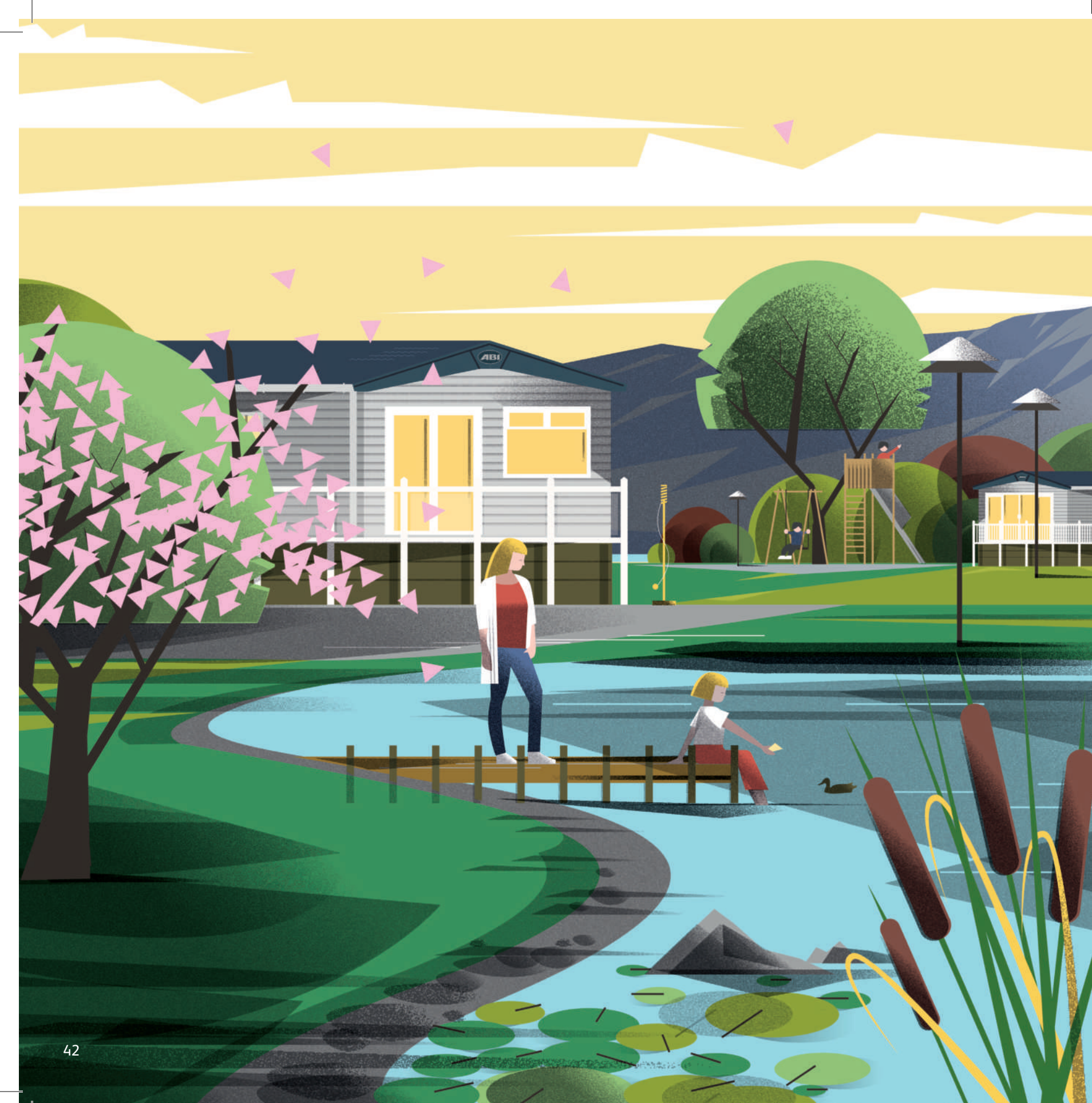


The Beverley 39ft x 12ft x 2 bedroom

### KEY:

- Fire
- Water heater
- Shower
- Bath
- Fridge/Freezer
- Front pull out bed

OPTIONAL  
WINTER  
PACKS  
See Page 86



# The Derwent

This is accessible holidaying at its finest. Internal sliding doors, wider entrances and lower countertops, every detail is taken care of for enjoyable and restful experiences. From the rich wooden tones to the feature fireplace, feel the warmth of the welcome from the moment you arrive.



*Where accessibility meets luxury*

Please note: Some items featured in this photography are scene-setting props or optional extras, not included in your purchase. Please speak to your park or dealership or refer to the 'all this included' section for this holiday home.



Shows optional front French doors, see page 47

# The Derwent



Cleverly designed with accessible holidaying in mind, full of carefully considered features, this holiday home makes relaxation easy for everyone.



For more information and to take a virtual tour, visit [www.abiuk.co.uk](http://www.abiuk.co.uk)

## All this included

- ✓ Matt finish Champagne aluminium cladding
- ✓ Carpet underlay throughout
- ✓ Sliding internal doors
- ✓ Separate lounge and kitchen
- ✓ Electric fire
- ✓ Scatter cushions in lounge
- ✓ USB socket in lounge
- ✓ Free-standing dining table and chairs
- ✓ Soft-close hinges on doors and drawers in kitchen
- ✓ Externally vented powered cooker hood
- ✓ Lowered base units in kitchen
- ✓ 3ft divan beds in master bedroom which can convert to a 6ft wide bed
- ✓ TV point in master bedroom
- ✓ Patient helper apparatus in master bedroom
- ✓ USB sockets in all bedrooms
- ✓ Wet room bathroom with Doc M disability equipment
- ✓ Bathroom extractor fan
- ✓ Widened entrance for wheelchair access
- ✓ Pictures in lounge

## Add any of these

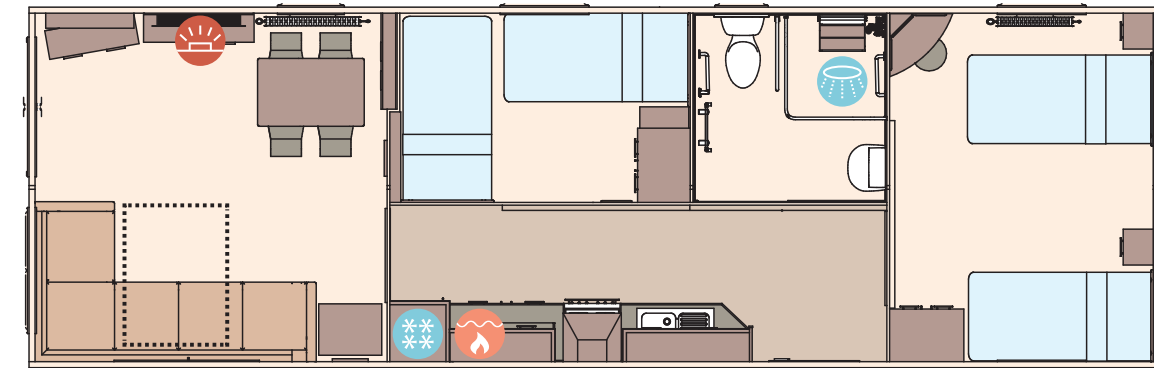
- Fully galvanised chassis
- 'Low E' PVCu Thermaglass double glazing
- Winter premium pack
- Winter electric pack
- Voiles throughout
- Integrated microwave oven
- Integrated fridge freezer
- Plain duvet covers and pillowcases
- Standard height base units in kitchen
- French patio doors



Shows optional front French doors, see page 47

## Highlights:

- Optional French patio doors available
- Full accessibility with wider door frames throughout
- 3ft divan beds in master bedroom
- Updated colour scheme for 2024



The Derwent 38ft x 12ft x 2 bedroom

KEY: Fire Water heater Shower Fridge/Freezer Front pull out bed

OPTIONAL WINTER PACKS See Page 86



## The Windermere

This firm favourite and homely hideaway is back, now in a dusky cornflower blue. With a thoughtful kitchen design and every curve of the sofa redesigned for maximum ahhh-factor on every slump, it's primed for laid-back living.





*A walk-in wardrobe for fancier dressing*

Please note: Some items featured in this photography are scene-setting props or optional extras, not included in your purchase. Please speak to your park or dealership or refer to the 'all this included' section for this holiday home.



Shows optional full front sliding doors, see page 53

# The Windermere

A homely haven thoughtfully designed to deliver maximum comfort, this holiday home is available in four different layouts. Pick the model that suits you.



For more information and to take a virtual tour, visit [www.abiuk.co.uk](http://www.abiuk.co.uk)

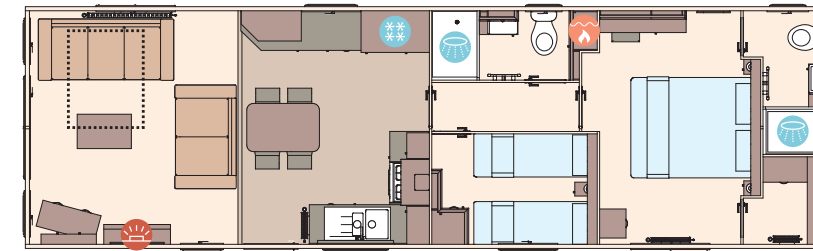
### All this included

- ✓ Matt finish Champagne aluminium cladding
- ✓ Carpet underlay throughout
- ✓ Scatter cushions in lounge
- ✓ Electric fire
- ✓ USB socket in lounge
- ✓ Additional sockets next to TV point in lounge
- ✓ Free-standing dining table and chairs
- ✓ Externally vented powered cooker hood
- ✓ Integrated fridge freezer
- ✓ 40mm worktops
- ✓ Soft-close hinges on doors and drawers in kitchen
- ✓ Lift-up bed in master bedroom
- ✓ King size bed in master bedroom (except 40ft x 12ft 3 bed model)
- ✓ TV point in master bedroom and one twin room
- ✓ Plain duvet covers and pillowcases
- ✓ Bed runner and scatter cushions on all beds
- ✓ USB sockets in all bedrooms
- ✓ Shaver socket
- ✓ Bathroom extractor fans

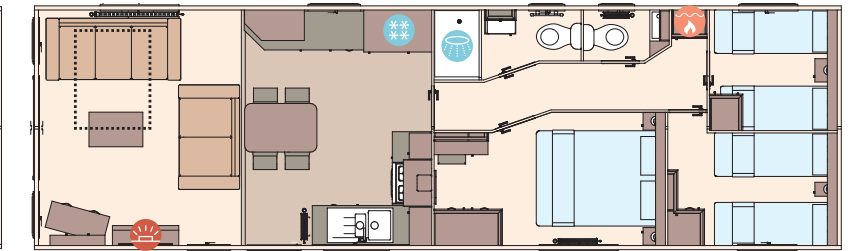
- ✓ Coat hooks in all bathrooms
- ✓ Composite kitchen sink
- ✓ Separate second toilet (3 bedroom models only)
- ✓ Separate en suite shower and toilet (2 bedroom models only)
- ✓ Voiles throughout

### Add any of these

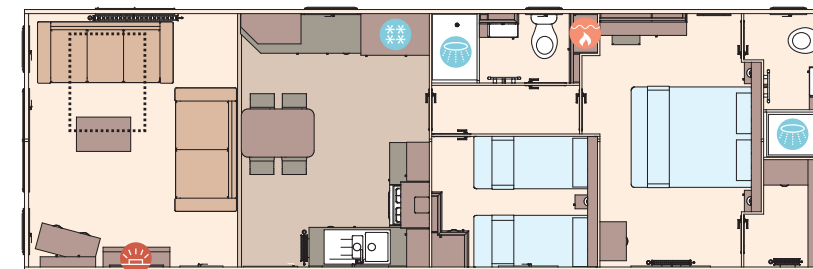
- Residential specification BS3632 (available on 13ft models only)
- Fully galvanised chassis
- 'Low E' PVCu Thermaglass double glazing
- Winter premium pack
- Winter electric pack
- Exterior door options available
- Integrated microwave oven
- Integrated dishwasher
- Integrated washing machine
- Bluetooth sound system in lounge
- 'Exclusive' pocket sprung mattresses
- Space saver bed (twin room only)



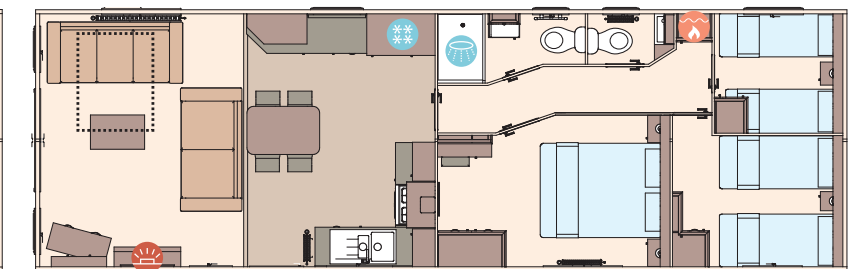
The Windermere 40ft x 12ft x 2 bedroom



The Windermere 40ft x 12ft x 3 bedroom



The Windermere Residential 40ft x 13ft x 2 bedroom



The Windermere Residential 40ft x 13ft x 3 bedroom

KEY: Fire Water heater Shower Fridge/Freezer Front pull out bed

OPTIONAL Residential specification BS3632 See Page 86

OPTIONAL WINTER PACKS See Page 86

## Highlights:

- Brand new model for 2024
- Luxury living in 12ft and 13ft wide holiday home
- En suite with shower in the 40ft x 12ft/13ft 2 bedroom models
- Free-standing domestic style sofas



Shows optional full front sliding doors, see page 53



# The Ingleton

Made for slow mornings, why not enjoy a second cup of coffee and savour the conversation at the breakfast bar? Thoughtful design ideas and chic modern touches, from entrance seat and storage to hotel-inspired comforts, mean you can live every day away in style.



*Step in and chill out*

Please note: Some items featured in this photography are scene-setting props or optional extras, not included in your purchase. Please speak to your park or dealership or refer to the 'all this included' section for this holiday home.



# The Ingleton

If you know this holiday home's stylish design is for you, there's only one thing left to do. Decide now, which of our four fantastic layouts will you choose?



For more information and to take a virtual tour, visit [www.abiuk.co.uk](http://www.abiuk.co.uk)

## All this included

- ✓ Matt finish Chateaux grey aluminium cladding
- ✓ Pre-galvanised twin axle chassis
- ✓ White 'Low E' PVCu Thermaglass double glazing
- ✓ Fully condensing boiler gas central heating
- ✓ Free-standing dining table and 4 chairs (2 bedroom model) & 6 chairs (3 bedroom model)
- ✓ Breakfast style chairs
- ✓ Satellite co-ax
- ✓ USB socket in lounge
- ✓ Scatter cushions in lounge
- ✓ Voiles throughout
- ✓ Soft-close drawers in kitchen drawers throughout
- ✓ 40mm worktops
- ✓ Integrated fridge freezer
- ✓ Externally vented powered cooker hood
- ✓ Lift-up bed in master bedroom
- ✓ TV point in all bedrooms
- ✓ USB sockets in all bedrooms
- ✓ King size bed in master bedroom (2 bedroom model only)
- ✓ En suite shower (2 bedroom model only)
- ✓ En suite toilet

- ✓ Bathroom extractor fans
- ✓ Shaver socket
- ✓ Additional sockets next to TV point in lounge
- ✓ Coat hooks in all bathrooms
- ✓ Entrance seat and coat storage area
- ✓ Composite kitchen sink
- ✓ Breakfast bar
- ✓ Full front sliding doors

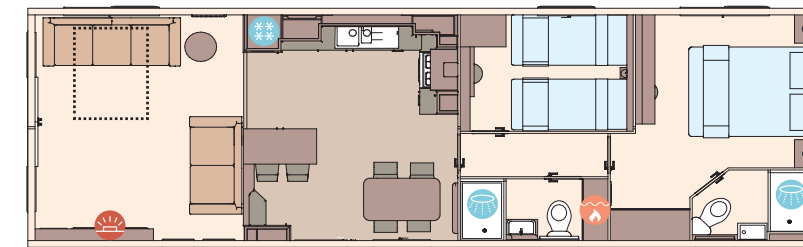
## Add any of these

- Upgrade to 13ft wide with BS3632 residential specification
- Deluxe Bluetooth sound system
- 'Exclusive' pocket sprung mattresses
- Space saver bed for twin room
- Integrated washing machine
- Integrated dishwasher
- Integrated microwave oven
- Fully galvanised chassis
- CanExel™ exterior cladding

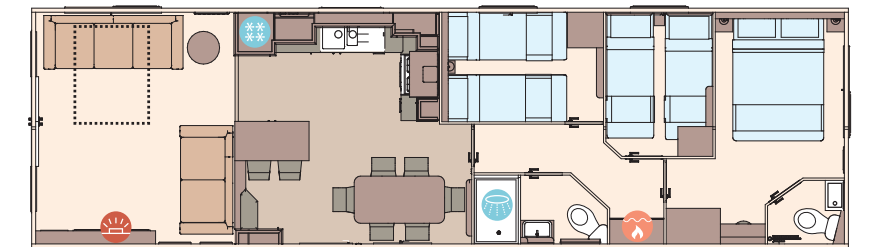


## Highlights:

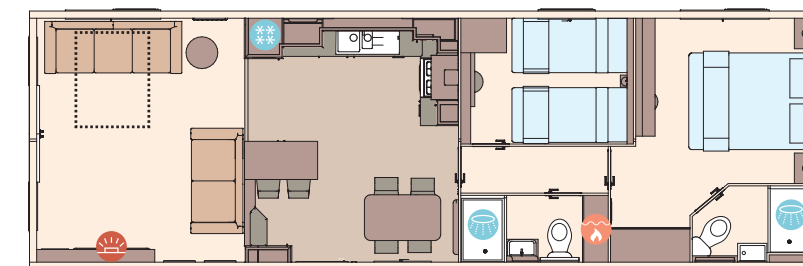
- Stylish holiday home in 12ft and 13ft models
- Open-plan family home with breakfast bar
- Option to upgrade to BS3632 residential specification
- Updated colour scheme for 2024



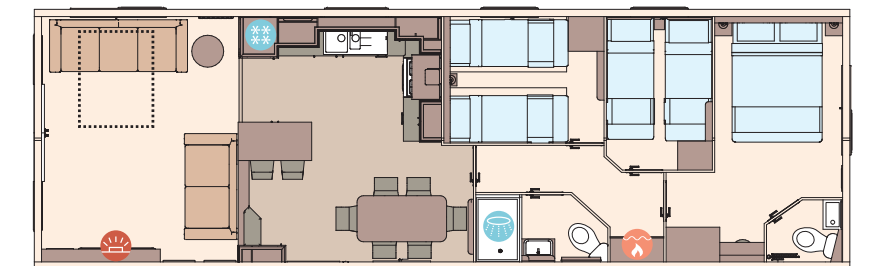
The Ingleton 40ft x 12ft x 2 bedroom



The Ingleton 41ft x 12ft x 3 bedroom



The Ingleton Residential 40ft x 13ft x 2 bedroom

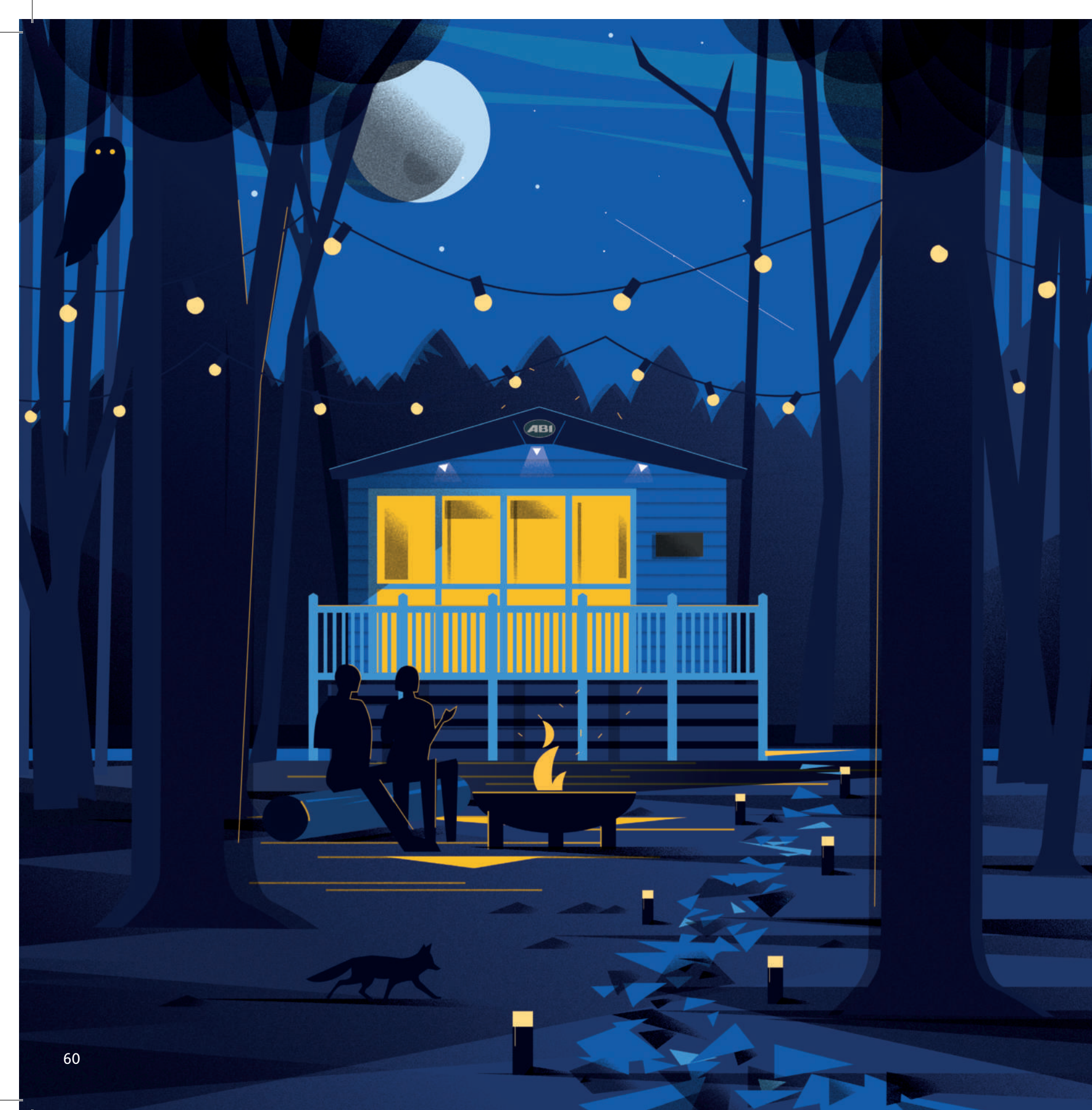


The Ingleton Residential 41ft x 13ft x 3 bedroom

KEY: Fire Water heater Shower Fridge/Freezer Front pull out bed

OPTIONAL  
Residential  
specification  
BS3632  
See Page 86

OPTIONAL  
WINTER  
PACKS  
See Page 86



## The Langdale

Slow down and switch off. Roll down the blinds and cosy up in front of the wood burner to let your stresses melt away. With a green feature wall and soft textures, it's easy to enjoy the calm of the great outdoors from the comfort of your living room. Take a moment to drink it all in.



Shows optional electric oven and hob, see page 65



Shows optional electric oven and hob, see page 65

*Made for me time*

Please note: Some items featured in this photography are scene-setting props or optional extras, not included in your purchase. Please speak to your park or dealership or refer to the 'all this included' section for this holiday home.





# The Langdale

**Dreaming of cosying up here? If you have your heart set on this holiday home, now all you need to do is choose between two bedrooms or three.**

For external CanExel™ Cladding option please visit [www.abiuk.co.uk](http://www.abiuk.co.uk)



For more information and to take a virtual tour, visit [www.abiuk.co.uk](http://www.abiuk.co.uk)

### All this included

- ✓ Matt finish Champagne aluminium cladding
- ✓ Pre-galvanised twin axle chassis
- ✓ White 'Low E' PVCu Thermaglass double glazing
- ✓ Front sliding doors
- ✓ Fully condensing boiler gas central heating
- ✓ Luxury wood burner style feature fire
- ✓ Carpet underlay throughout
- ✓ Free-standing dining table and chairs
- ✓ Satellite co-ax
- ✓ USB socket in lounge
- ✓ Scatter cushions in lounge
- ✓ Voiles throughout
- ✓ Soft-close hinges on doors and drawers in kitchen
- ✓ Integrated oven and separate 5 burner hob
- ✓ 40mm worktops
- ✓ Integrated fridge freezer
- ✓ Externally vented powered cooker hood
- ✓ Lift-up bed in master bedroom
- ✓ TV point in all bedrooms
- ✓ USB sockets in all bedrooms
- ✓ King size bed in master bedroom (2 bedroom model only)

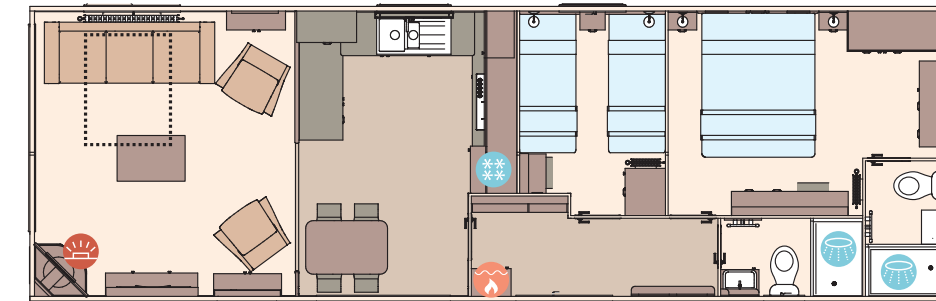
- ✓ Composite kitchen sink
- ✓ Plain duvet covers and pillowcases
- ✓ Bed runners and scatter cushions on all beds
- ✓ En suite shower (2 bedroom model only)
- ✓ En suite toilet
- ✓ Bathroom extractor fans
- ✓ Shaver socket
- ✓ Additional sockets next to TV point in lounge
- ✓ Coat hooks in all bathrooms
- ✓ Entrance hall and cloakroom
- ✓ Stylish pictures throughout
- ✓ Full front sliding doors

### Add any of these

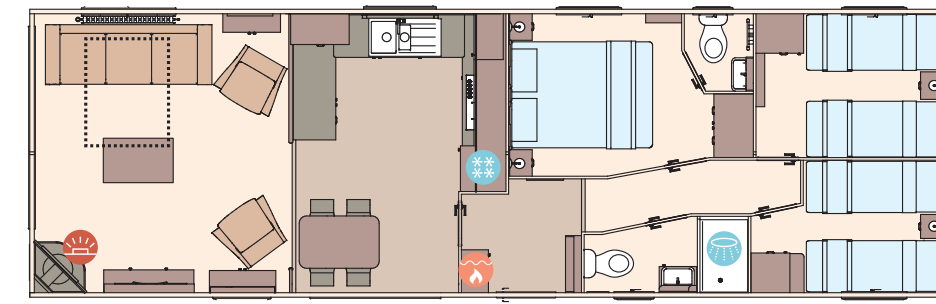
- Residential specification BS3632
- Deluxe Bluetooth sound system
- 'Exclusive' pocket sprung mattresses
- Space saver bed for twin room
- Integrated washing machine
- Integrated dishwasher
- Integrated microwave oven
- Fully galvanised chassis
- CanExel™ exterior cladding
- Vinyl flooring in lounge in lieu of carpet

## Highlights:

- Luxury wood burner style feature fire
- Free-standing domestic style seats
- Modern spacious kitchen
- Restyled and updated colour scheme for 2024



The Langdale 40ft x 13ft x 2 bedroom



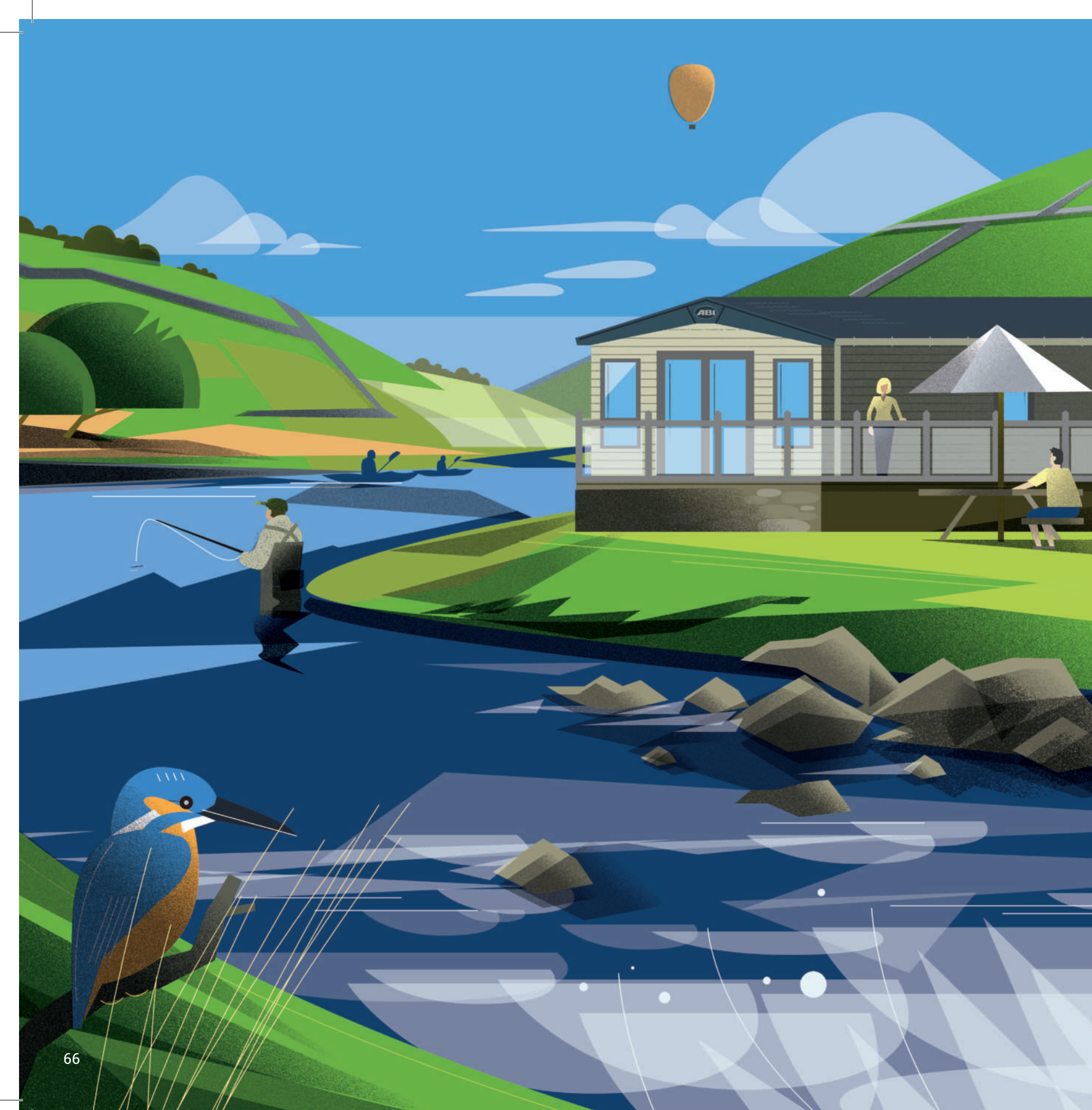
The Langdale 41ft x 13ft x 3 bedroom

### KEY:

- Fire
- Water heater
- Shower
- Fridge/Freezer
- Front pull out bed

**OPTIONAL Residential specification BS3632**  
See Page 86





Shows optional VELUX® rooflight, see page 71

# The Ambleside

Cook up happiness here. Generously designed with a fine dining kind of life in mind, drenched in sunshine, smattered with traditional wooden touches and opulent fabric finishes, it's a deliciously delightful stay.



*Idyllic all year round*

Please note: Some items featured in this photography are scene-setting props or optional extras, not included in your purchase. Please speak to your park or dealership or refer to the 'all this included' section for this holiday home.



Shows optional full front sliding doors and VELUX® rooflight, see page 71

# The Ambleside

If you can already see yourself here, enjoying stays in all four seasons, then perhaps it's time to pick the layout you'd love - there are four different models.

For external CanExel™ Cladding option please visit [www.abiuk.co.uk](http://www.abiuk.co.uk)



For more information and to take a virtual tour, visit [www.abiuk.co.uk](http://www.abiuk.co.uk)

## All this included

- ✓ Matt finish Chateaux grey aluminium cladding
- ✓ Pre-galvanised twin axle chassis
- ✓ Graphite grey 'Low E' PVCu Thermaglass double glazing
- ✓ Full front sliding doors
- ✓ Fully condensing boiler gas central heating
- ✓ Log burner style electric fire
- ✓ Carpet underlay throughout
- ✓ Free-standing dining table and chairs
- ✓ Upholstered footstool
- ✓ Satellite co-ax
- ✓ USB socket in lounge
- ✓ Scatter cushions in lounge
- ✓ Voiles throughout
- ✓ Soft-close drawers throughout
- ✓ Integrated oven and separate 5 burner hob
- ✓ 40mm worktops
- ✓ Integrated fridge freezer
- ✓ Externally vented powered cooker hood
- ✓ Lift-up bed in master bedroom
- ✓ TV point in all bedrooms
- ✓ USB sockets in all bedrooms (includes USB sockets on both sides of the main bed)
- ✓ King size bed in master bedroom (2 bedroom model only)
- ✓ Plain duvet covers and pillowcases
- ✓ Bed runners and scatter cushions on all beds
- ✓ Separate en suite toilet and shower
- ✓ Bathroom extractor fans

- ✓ Shaver socket
- ✓ Coat hooks in all bathrooms
- ✓ Entrance hall
- ✓ Composite kitchen sink
- ✓ Wicker storage baskets in kitchen
- ✓ Wall lighting in lounge

## Add any of these

- Premier Pack
- Residential specification BS3632
- 'Exclusive' pocket sprung mattresses
- Integrated dishwasher
- Integrated washing machine
- Integrated microwave oven
- Fully galvanised chassis
- Deluxe Bluetooth sound system
- Second bedroom as double instead of twin, bed includes lift-up storage (Premier model)
- CanExel™ exterior cladding
- Space saver bed in twin room
- Additional window in lounge nearside corner
- Front sliding door in lieu of French patio doors
- VELUX® rooflight window to kitchen

## The Ambleside Premier Pack

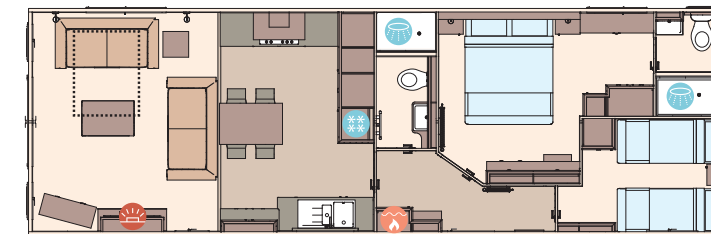
- ✓ Light grey hard PVCu cladding
- ✓ 14ft wide
- ✓ Larger sofa
- ✓ 3' beds in twin room
- ✓ Dressing table with stool in twin room (2 bedroom model only)



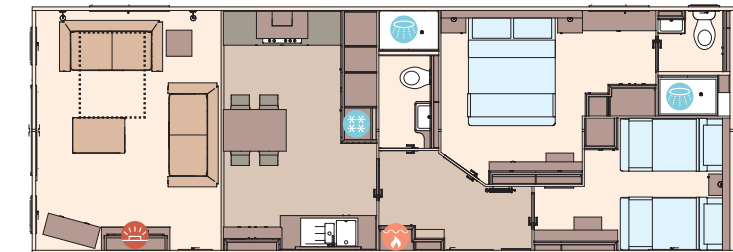
Shows optional full front sliding doors, see page 71

## Highlights:

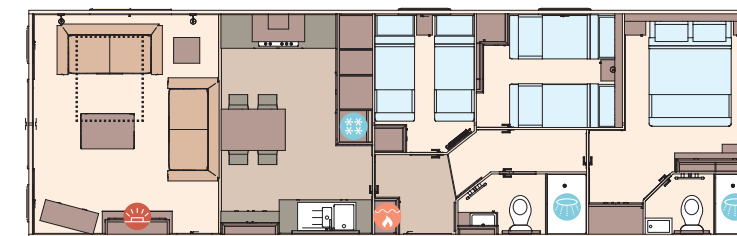
- Stunning kitchen with integrated appliances
- Home-from-home styling
- 14ft Premier Pack available providing more space and double bed option in twin room
- Large, comfortable free-standing sofas
- Optional panoramic sliding doors
- En suite shower
- Updated colour scheme for 2024



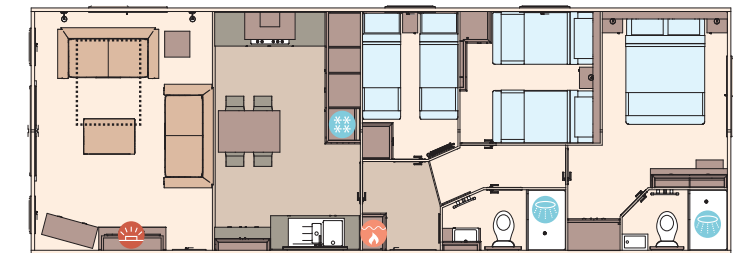
The Ambleside 40ft x 13ft x 2 bedroom



The Ambleside Premier 40ft x 14ft x 2 bedroom



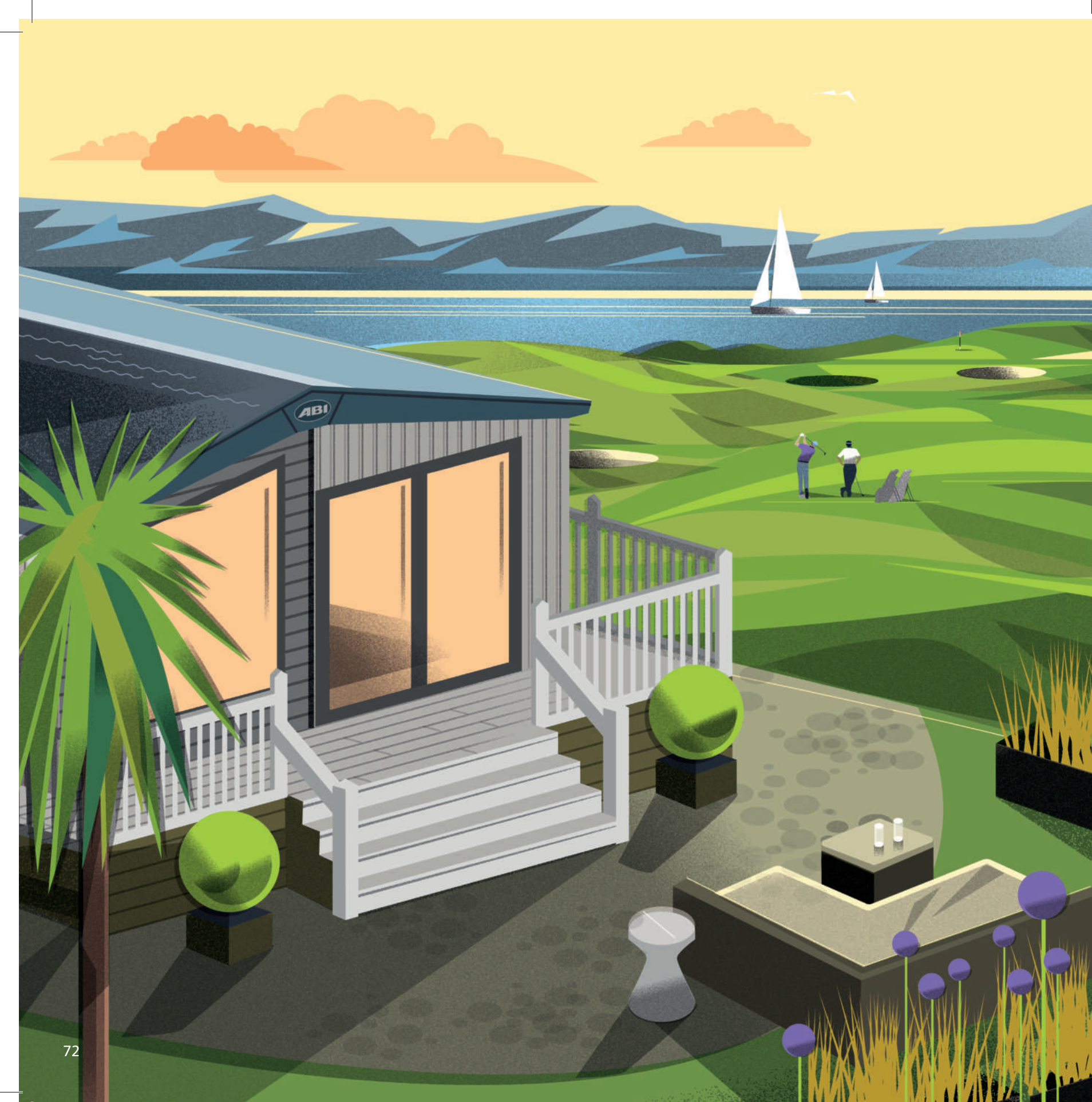
The Ambleside 41ft x 13ft x 3 bedroom



The Ambleside Premier 41ft x 14ft x 3 bedroom

KEY: Fire Water heater Shower Fridge/Freezer Front pull out bed

OPTIONAL Residential specification BS3632 See Page 86



## The Beaumont Lodge

Step into laid-back glamour. Wood panelled accent walls create a cool, relaxed vibe. Enjoy its chilled-out charm with showstopping views, a seriously sink-in-able tub and beautifully lit floating vanity unit. Holiday with wow factor.



*Glamorous by nature*

Please note: Some items featured in this photography are scene-setting props or optional extras, not included in your purchase. Please speak to your park or dealership or refer to the 'all this included' section for this holiday home.



# The Beaumont Lodge

Is this showstopper of a holiday home the one for you? Then it's time to explore its layout and what delightful details you'll find inside.

For external CanExel™ Cladding option please visit [www.abiuk.co.uk](http://www.abiuk.co.uk)



For more information and to take a virtual tour, visit [www.abiuk.co.uk](http://www.abiuk.co.uk)

## All this included

- ✓ Fully galvanised heavy-duty chassis
- ✓ Chateaux grey PVCu cladding
- ✓ Front sliding patio doors
- ✓ White 'Low E' PVCu Thermaglass double glazing
- ✓ Carpet underlay throughout
- ✓ Fully condensing boiler gas central heating
- ✓ Voiles throughout
- ✓ Stylish domestic sofas
- ✓ Upholstered footstool
- ✓ Free-standing dining table and 2 chairs around fixed dinette seating
- ✓ Breakfast style chairs
- ✓ Scatter cushions in lounge
- ✓ USB socket in lounge
- ✓ Satellite co-ax
- ✓ Additional sockets next to TV point in lounge
- ✓ 5 burner gas hob including wok burner
- ✓ Composite kitchen sink
- ✓ Integrated fridge freezer
- ✓ Integrated dishwasher
- ✓ Integrated microwave oven
- ✓ Externally vented powered cooker hood
- ✓ Soft-close hinges on doors and drawers throughout
- ✓ Lift-up bed in master bedroom
- ✓ King size bed in master bedroom
- ✓ Plain duvet covers and pillowcases
- ✓ Bed runners and scatter cushions on all beds

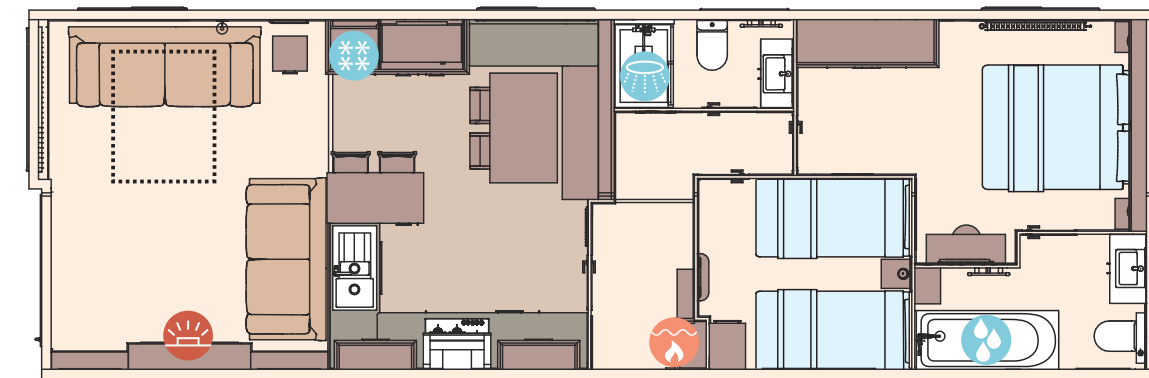
- ✓ USB sockets in all bedrooms (includes USB sockets to both sides of the main bed)
- ✓ TV point in all bedrooms
- ✓ Luxury en suite with domestic style bath
- ✓ Bathroom extractor fans
- ✓ Shaver socket
- ✓ Coat hooks in all bathrooms
- ✓ Wicker storage baskets in kitchen
- ✓ Stylish round and oval mirrors in all bedrooms, bathroom and en suite
- ✓ Roman fabric blinds to all windows (except front end of holiday home)

## Add any of these

- Residential specification BS3632
- Deluxe Bluetooth sound system
- Deluxe NEFF appliances including microwave, oven and hob and extractor hood
- 'Exclusive' pocket sprung mattresses
- Space saver bed for twin room
- Integrated washing machine
- Timberwolf Ced-R-Vue CanExel™ exterior cladding with VinyPlus feature cladding
- L-shaped seating with 1 x armchair in lieu of free-standing sofas

## Highlights:

- Brand new model for 2024
- Opulent feature window
- Optional deluxe NEFF kitchen appliances
- Natural contemporary feature slatted wall panelling
- Bath in en suite



The Beaumont Lodge 43ft x 14ft x 2 bedroom

KEY: Fire Water heater Shower Bath Fridge/Freezer Front pull out bed

OPTIONAL Residential specification BS3632 See Page 86



## The Westwood Lodge

Hosting has never felt so good. Opulent blues and striking wood tones make this a sophisticated and inviting living space. Open plan with stylish wall lighting, statement mirrors and a sommelier-worthy wine cooler, it's designed for entertaining.



*Let the good times flow*

Please note: Some items featured in this photography are scene-setting props or optional extras, not included in your purchase. Please speak to your park or dealership or refer to the 'all this included' section for this holiday home.





# The Westwood Lodge

Can you already picture yourself here? Read on to discover all the finer details this holiday home comes with to help you relax luxuriously.

For external CanExel™ Cladding option, please visit [www.abiuk.co.uk](http://www.abiuk.co.uk)



For more information and to take a virtual tour, visit [www.abiuk.co.uk](http://www.abiuk.co.uk)

## All this included

- ✓ Light grey hard PVCu cladding
- ✓ Fully galvanised heavy-duty chassis
- ✓ Front sliding doors
- ✓ Graphite grey 'Low E' PVCu Thermaglass double glazing
- ✓ Carpet underlay throughout
- ✓ Fully condensing boiler gas central heating
- ✓ Electric fire
- ✓ Free-standing domestic style furniture
- ✓ Scatter cushions in lounge
- ✓ Free-standing dining table and 6 chairs
- ✓ USB socket in lounge
- ✓ Satellite co-ax
- ✓ Integrated fridge freezer
- ✓ Integrated dishwasher
- ✓ Integrated microwave oven
- ✓ Externally vented powered cooker hood
- ✓ 5 burner gas hob including wok burner
- ✓ Composite kitchen sink
- ✓ Soft-close hinges on doors and drawers throughout
- ✓ Slate effect 25mm kitchen worktops
- ✓ King size bed in master bedroom
- ✓ Lift-up bed in master bedroom
- ✓ 3ft single beds
- ✓ Plain duvet covers and pillowcases
- ✓ Bed throws and scatter cushions on all beds
- ✓ USB sockets in all bedrooms (includes USB sockets on both sides of the main bed)
- ✓ TV point in all bedrooms
- ✓ Separate en suite shower and toilet
- ✓ Bathroom extractor fans

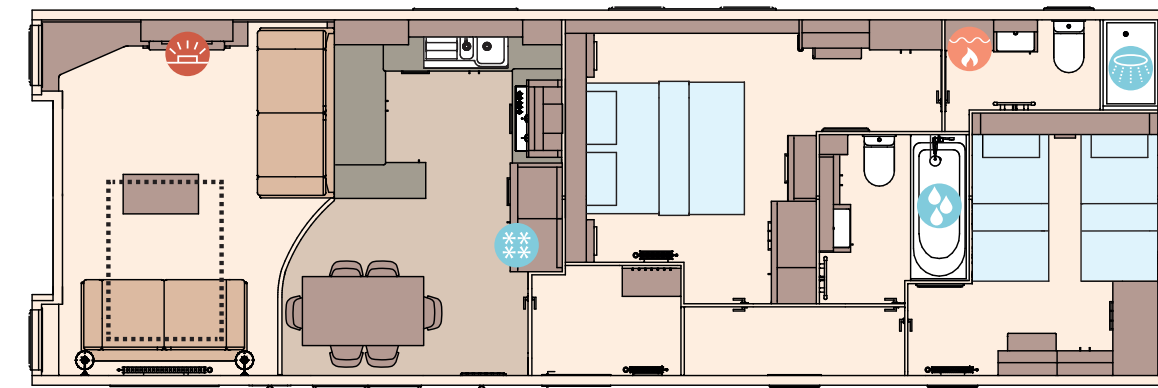
- ✓ Bathroom with domestic style bath
- ✓ Shaver socket
- ✓ Luxury soft-close toilets
- ✓ Coat hooks in all bathrooms and master bedroom
- ✓ Entrance hall and cloakroom
- ✓ Pictures in hallway and bathroom
- ✓ VELUX® rooflight window in kitchen
- ✓ Corner pull-out shelving unit in the kitchen
- ✓ Wine cooler in kitchen
- ✓ Stylish wall lights in lounge
- ✓ Feature fireplace with wooden beam and classic mirror
- ✓ Feature wood panelling walls in lounge and master bedroom
- ✓ Wireless phone charging station
- ✓ Architectural external roof panels
- ✓ 9.5ft internally vaulted ceiling
- ✓ Contemporary radiator in lounge

## Add any of these

- Deluxe Bluetooth sound system
- 'Exclusive' pocket sprung mattresses
- Space saver bed for twin room
- Integrated washing machine
- CanExel™ exterior cladding (available in D5 Ridgewood or Ced-R-Vue styles)
- TV facility in lounge above fireplace in lieu of mirror
- Voiles throughout
- Deluxe NEFF appliances including microwave, oven and hob and extractor hood

## Highlights:

- Sumptuous master bedroom with dressing area and en suite shower
- Spacious twin room with 3ft beds
- Luxury kitchen
- The ultimate in holiday homes
- Built to BS3632 Residential Specification
- Contemporary styling throughout



The Westwood Lodge 44ft x 14ft x 2 bedroom

KEY: Fire Water heater Shower Bath Fridge/Freezer Front pull out bed

OPTIONAL Residential specification BS3632 See Page 86

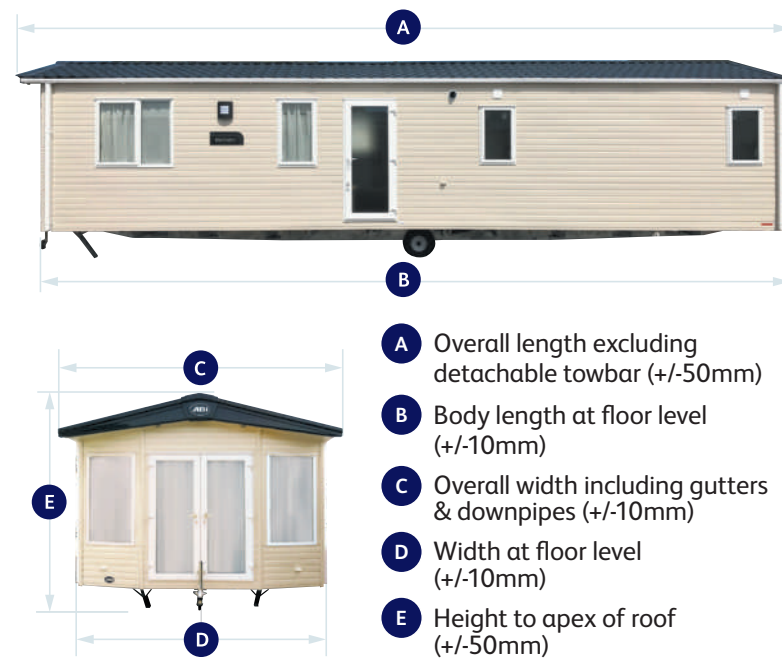
# MODEL SPECIFICATIONS AND OPTIONS.

		THE COWORTH								THE KESWICK								THE WIMBLEDON		
		28' X 10' 2 BED	32' X 10' 2 BED	36' X 10' 3 BED	28' X 12' 2 BED	32' X 12' 2 BED	36' X 12' 2 BED	36' X 12' 3 BED	39' X 12' 3 BED	28' X 10' 2 BED	32' X 10' 2 BED	36' X 10' 3 BED	28' X 12' 2 BED	32' X 12' 2 BED	36' X 12' 2 BED	36' X 12' 3 BED	39' X 12' 3 BED	36' X 12' 2 BED	38' X 12' 2 BED	40' X 12' 3 BED
EXTERIOR	PAINTED CHASSIS	✓	✓	✓	✓	✓	✓	✓	✓	✓	✓	✓	✓	✓	✓	✓	✓	✓	✓	✓
	PRE-GALVANISED CHASSIS	X	X	X	X	X	X	X	X	X	X	X	X	X	X	X	X	X	X	X
	FULLY GALVANISED CHASSIS	0	0	0	0	0	0	0	0	0	0	0	0	0	0	0	0	0	0	0
	FULLY GALVANISED HEAVY DUTY 'I' BEAM CHASSIS	X	X	X	X	X	X	X	X	X	X	X	X	X	X	X	X	X	X	X
	PVCu CLADDING	X	X	X	X	X	X	X	X	X	X	X	X	X	X	X	X	X	X	X
	CANEXEL™ CLADDING	X	X	X	X	X	X	X	X	X	X	X	X	X	X	X	X	X	X	X
	UPGRADED EXTERNAL WALLS	X	X	X	X	X	X	X	X	✓	✓	✓	✓	✓	✓	✓	✓	✓	✓	✓
	FRONT FRENCH DOORS	X	X	X	X	0	0	0	0	X	X	X	X	0	0	0	0	0	0	0
	FRONT SLIDING DOORS	X	X	X	X	0	0	0	0	X	X	X	X	0	0	0	0	0	0	0
	FULL FRONT SLIDING DOORS	X	X	X	X	X	X	X	X	X	X	X	X	X	X	X	X	0	0	0
VELEX® ROOFLIGHT IN KITCHEN	X	X	X	X	X	X	X	X	X	X	X	X	X	X	X	X	X	X	X	
'LOW E' PVCu THERMAGLASS DOUBLE GLAZING	0	0	0	0	0	0	0	0	0	0	0	0	0	0	0	0	0	0	0	
INTERIOR	WINTER ELECTRIC PACK	0	0	0	0	0	0	0	0	0	0	0	0	0	0	0	0	0	0	0
	WINTER PREMIUM PACK	0	0	0	0	0	0	0	0	0	0	0	0	0	0	0	0	0	0	0
	VOILES THROUGHOUT	0	0	0	0	0	0	0	0	0	0	0	0	0	0	0	0	0	0	0
LOUNGE/DINING AREA	ELECTRIC FIRE	X	X	X	X	X	X	X	X	✓	✓	✓	✓	✓	✓	✓	✓	✓	✓	✓
	SCATTER CUSHIONS	✓	✓	✓	✓	✓	✓	✓	✓	✓	✓	✓	✓	✓	✓	✓	✓	0	0	0
	DELUXE BLUETOOTH SOUND SYSTEM	X	X	X	X	X	X	X	X	X	X	X	X	X	X	X	X	0	0	0
	USB SOCKET IN LOUNGE	0	0	0	0	0	0	0	0	✓	✓	✓	✓	✓	✓	✓	✓	✓	✓	✓
	SEPARATE LOUNGE / KITCHEN	X	X	X	X	X	X	X	X	X	X	X	X	X	X	X	X	X	X	X
	FREE-STANDING DINING TABLE & CHAIRS	0	0	0	0	0	0	0	0	0	0	0	0	0	0	0	0	✓	✓	✓
L-SHAPED DINETTE SEATING	X	X	X	X	X	X	X	X	X	0	0	X	X	0	0	0	X	X	X	
KITCHEN	POWERED COOKER HOOD	0	0	0	0	0	0	0	0	✓	✓	✓	✓	✓	✓	✓	✓	✓	✓	✓
	FREE-STANDING FRIDGE OR FRIDGE FREEZER	0	0	0	0	0	0	0	0	0	0	0	0	0	0	0	0	0	0	0
	INTEGRATED FRIDGE FREEZER	0	0	0	0	0	0	0	0	0	0	0	0	0	0	0	0	0	0	0
	INTEGRATED MICROWAVE OVEN	0	0	0	0	0	0	0	0	0	0	0	0	0	0	0	0	0	0	0
	DISHWASHER	X	X	X	X	X	X	X	X	X	X	X	X	X	X	X	X	X	X	X
	WASHING MACHINE	X	X	X	X	X	X	X	X	X	X	X	X	X	X	X	X	X	X	X
	WINE COOLER	X	X	X	X	X	X	X	X	X	X	X	X	X	X	X	X	X	X	X
	NEFF APPLIANCE UPGRADE	X	X	X	X	X	X	X	X	X	X	X	X	X	X	X	X	X	X	X
BATHROOM	DOMESTIC STYLE BATH	X	X	X	X	X	X	X	X	X	X	X	X	X	X	X	X	X	X	X
	SEPARATE/EN SUITE TOILET	X	X	X	X	✓	✓	✓	✓	X	X	X	X	✓	✓	✓	✓	✓	✓	✓
	EN SUITE SHOWER OR BATH	X	X	X	X	X	X	X	X	X	X	X	X	X	X	X	X	X	X	X
	BATHROOM EXTRACTOR FAN	0	0	0	0	0	0	0	0	✓	✓	✓	✓	✓	✓	✓	✓	✓	✓	✓
BEDROOMS	LIFT-UP DOUBLE BED IN MASTER BEDROOM	0	0	0	0	0	0	0	0	✓	✓	✓	✓	✓	✓	✓	✓	✓	✓	✓
	KING SIZE BED IN MASTER BEDROOM	X	X	X	✓	X	✓	✓	✓	X	✓	✓	X	✓	✓	X	X	✓	✓	✓
	DUVET COVERS AND PILLOWCASES	0	0	0	0	0	0	0	0	0	0	0	0	0	0	0	0	0	0	0
	SPACE SAVER BED (TWIN ROOM ONLY)	0	0	0	0	0	0	0	0	0	0	0	0	0	0	0	0	0	0	0
	EXCLUSIVE POCKET SPRUNG MATTRESS	X	X	X	X	X	X	X	X	X	X	X	X	X	X	X	X	0	0	0
	USB SOCKET IN BEDROOMS	0	0	0	0	0	0	0	0	0	0	0	0	0	0	0	0	✓	✓	✓
	TV POINT IN MASTER BEDROOM	X	X	X	X	X	X	X	X	✓	✓	✓	✓	✓	✓	✓	✓	✓	✓	✓
	TV POINT IN 1 X TWIN ROOM	X	X	X	X	X	X	X	X	✓	✓	✓	✓	✓	✓	✓	✓	✓	✓	✓
RESIDENTIAL BUILD BS3632	X	X	X	X	X	X	X	X	X	X	X	X	X	X	X	X	X	X	X	

		THE ST DAVID			THE BEVERLEY			THE DERWENT	THE WINDERMERE				THE INGLETON				THE LANGDALE		THE AMBLESIDE		THE BEAUMONT LODGE	THE WESTWOOD LODGE
		37' X 12' 2 BED	38' X 12' 2 BED	39' X 12' 3 BED	36' X 12' 2 BED	39' X 12' 2 BED	40' X 12' 3 BED	38' X 12' 2 BED WCF	40' X 12' 2 BED	40' X 12' 3 BED	40' X 13' 2 BED	40' X 13' 3 BED	40' X 12' 2 BED	41' X 12' 3 BED	40' X 13' 2 BED	41' X 13' 3 BED	40' X 13' 2 BED	41' X 13' 3 BED	40' X 13' 2 BED	41' X 13' 3 BED	43' X 14' 2 BED	44' X 14' 2 BED
EXTERIOR	PAINTED CHASSIS	✓	✓	✓	✓	✓	✓	✓	✓	✓	✓	✓	X	X	X	X	X	X	X	X	X	X
	PRE-GALVANISED CHASSIS	X	X	X	X	X	X	X	X	X	X	X	✓	✓	✓	✓	✓	✓	✓	✓	X	X
	FULLY GALVANISED CHASSIS	0	0	0	0	0	0	0	0	0	0	0	0	0	0	0	0	0	0	0	X	X
	FULLY GALVANISED HEAVY DUTY 'I' BEAM CHASSIS	X	X	X	X	X	X	X	X	X	X	X	X	X	X	X	X	X	X	X	✓	✓
	PVCu CLADDING	X	X	X	X	X	X	X	X	X	X	X	X	X	X	X	X	X	0	0	✓	✓
	CANEXEL™ CLADDING	X	X	X	X	X	X	X	X	X	X	X	0	0	0	0	0	0	0	0	0	0
	UPGRADED EXTERNAL WALLS	✓	✓	✓	✓	✓	✓	✓	✓	✓	✓	✓	✓	✓	✓	✓	✓	✓	✓	✓	✓	✓
	FRONT FRENCH DOORS	0	0	0	X	X	X	0	0	0	0	0	X	X	X	X	X	X	✓	✓	X	X
	FRONT SLIDING DOORS	0	0	0	X	X	X	0	0	0	0	0	X	X	X	X	X	X	✓	✓	X	X
	FULL FRONT SLIDING DOORS	0	0	0	0	0	0	X	0	0	0	0	✓	✓	✓	✓	✓	✓	0	0	X	X
VELEX® ROOFLIGHT IN KITCHEN	X	X	X	X	X	X	X	X	X	X	X	X	X	X	X	X	X	0	0	X	X	
'LOW E' PVCu THERMAGLASS DOUBLE GLAZING	0	0	0	0	0	0	0	0	0	0	0	✓	✓	✓	✓	✓	✓	✓	✓	✓	✓	
INTERIOR	WINTER ELECTRIC PACK	0	0	0	0	0	0	0	0	0	0	0	X	X	X	X	X	X	X	X	X	X
	WINTER PREMIUM PACK	0	0	0	0	0	0	0	0	0	0	0	✓	✓	✓	✓	✓	✓	✓	✓	✓	✓
	VOILES THROUGHOUT	0	0	0	0	0	0	0	✓	✓	✓	✓	✓	✓	✓	✓	✓	✓	✓	✓	X	0
LOUNGE/DINING AREA	ELECTRIC FIRE	✓	✓	✓	✓	✓	✓	✓	✓	✓	✓	✓	✓	✓	✓	✓	✓	✓	✓	✓	✓	✓
	SCATTER CUSHIONS	0	0	0	0	0	0	✓	✓	✓	✓	✓	✓	✓	✓	✓	✓	✓	✓	✓	✓	✓
	DELUXE BLUETOOTH SOUND SYSTEM	0	0	0	0	0	0	X	0	0	0	0	0	0	0	0	0	0	0	0	0	0
	USB SOCKET IN LOUNGE	✓	✓	✓	✓	✓	✓	✓	✓	✓	✓	✓	✓	✓	✓	✓	✓	✓	✓	✓	✓	✓
	SEPARATE LOUNGE / KITCHEN	X	X	X	X	X	X	✓	X	X	X	X	X	X	X	X	X	X	X	X	X	X
	FREE-STANDING DINING TABLE & CHAIRS	✓	✓	✓	✓	✓	✓	✓	✓	✓	✓	✓	✓	✓	✓	✓	✓	✓	✓	✓	✓	✓
L-SHAPED DINETTE SEATING	X	X	X	X	X	X	X	X	X	X	X	X	X	X	X	X	X	X	X	✓	✓	
KITCHEN	POWERED COOKER HOOD	✓	✓	✓	✓	✓	✓	✓	✓	✓	✓	✓	✓	✓	✓	✓	✓	✓	✓	✓	✓	✓
	FREE-STANDING FRIDGE OR FRIDGE FREEZER	0	0	0	0	0	0	X	X	X	X	X	X	X	X	X	X	X	X	X	X	X
	INTEGRATED FRIDGE FREEZER	0	0	0	0	0	0	0	✓	✓	✓	✓	✓	✓	✓	✓	✓	✓	✓	✓	✓	✓
	INTEGRATED MICROWAVE OVEN	0	0	0	0	0	0	0	0	0	0	0	0	0	0	0	0	0	0	0	✓	✓
	DISHWASHER	0	0	0	0	0	0	X	0	0	0	0	0	0	0	0	0	0	0	0	✓	✓
	WASHING MACHINE	0	0	0	0	0	0	X	0	0	0	0	0	0	0	0	0	0	0	0	0	0
	WINE COOLER	X	X	X	X	X	X	X	X	X	X	X	X	X	X	X	X	X	X	X	X	X
	NEFF APPLIANCE UPGRADE	X	X	X	X	X	X	X	X	X	X	X	X	X	X	X	X	X	X	X	0	0
BATHROOM	DOMESTIC STYLE BATH	X	X	X	X	X	X	X	X	X	X	X	X	X	X	X	X	X	X	X	✓	✓
	SEPARATE/EN SUITE TOILET	✓	✓	✓	✓	✓	✓	X	✓	✓	✓	✓	✓	✓	✓	✓	✓	✓	✓	✓	✓	✓
	EN SUITE SHOWER OR BATH	X	✓	X	X	✓	X	X	✓	X	✓	X	✓	X	✓	X	✓	X	✓	✓	✓	✓
	BATHROOM EXTRACTOR FAN	✓	✓	✓	✓	✓	✓	✓	✓	✓	✓	✓	✓	✓	✓	✓	✓	✓	✓	✓	✓	✓
BEDROOMS	LIFT-UP DOUBLE BED IN MASTER BEDROOM	✓	✓	✓	✓	✓	✓	X	✓	✓	✓	✓	✓	✓	✓	✓	✓	✓	✓	✓	✓	✓
	KING SIZE BED IN MASTER BEDROOM	✓	✓	X	✓	✓	X	X	✓	X	✓	✓	✓	X	✓	X	✓	X	✓	X	✓	✓
	DUVET COVERS AND PILLOWCASES	0	0	0	0	0	0	0	✓	✓	✓	✓	✓	✓	✓	✓	✓	✓	✓	✓	✓	✓
	SPACE SAVER BED (TWIN ROOM ONLY)	0	0	0	0	0	0	0	0	0	0	0	0									

MODEL SIZE	A	B	C	D	E
THE COWORTH 28' X 10' 2 BED	9.000	8.700	3.340	3.070	3.410
THE COWORTH 32' X 10' 2 BED	10.220	9.920	3.340	3.070	3.410
THE COWORTH 36' X 10' 3 BED	11.440	11.140	3.340	3.070	3.410
THE COWORTH 28' X 12' 2 BED	9.000	8.700	3.950	3.680	3.410
THE COWORTH 32' X 12' 2 BED	10.220	9.920	3.950	3.680	3.410
THE COWORTH 36' X 12' 2 BED	11.440	11.140	3.950	3.680	3.410
THE COWORTH 36' X 12' 3 BED	11.440	11.140	3.950	3.680	3.410
THE COWORTH 39' X 12' 3 BED	12.360	12.060	3.950	3.680	3.410
THE KESWICK 28' X 10' 2 BED	9.160	8.760	3.400	3.130	3.410
THE KESWICK 32' X 10' 2 BED	10.390	9.980	3.400	3.130	3.410
THE KESWICK 36' X 10' 3 BED	11.610	11.200	3.400	3.130	3.410
THE KESWICK 28' X 12' 2 BED	9.170	8.760	4.010	3.740	3.410
THE KESWICK 32' X 12' 2 BED	10.390	9.980	4.010	3.740	3.410
THE KESWICK 36' X 12' 2 BED	11.610	11.200	4.010	3.740	3.410
THE KESWICK 36' X 12' 3 BED	11.610	11.200	4.010	3.740	3.410
THE KESWICK 39' X 12' 3 BED	12.520	12.120	4.010	3.740	3.410
THE WIMBLEDON 36' X 12' 2 BED	11.530	11.200	4.010	3.740	3.410
THE WIMBLEDON 38' X 12' 2 BED	12.140	11.810	4.010	3.740	3.410
THE WIMBLEDON 40' X 12' 3 BED	12.690	12.360	4.010	3.740	3.410
THE ST DAVID 37' X 12' 2 BED	11.620	11.300	3.950	3.680	3.410
THE ST DAVID 38' X 12' 2 BED	11.930	11.600	3.950	3.680	3.410
THE ST DAVID 39' X 12' 3 BED	12.230	11.910	3.950	3.680	3.410
THE BEVERLEY 36' X 12' 2 BED	11.284	10.972	3.950	3.680	3.410
THE BEVERLEY 39' X 12' 2 BED	12.199	11.887	3.950	3.680	3.410
THE BEVERLEY 40' X 12' 3 BED	12.565	12.344	3.950	3.680	3.410
THE DERWENT WCF 38' X 12' 2 BED	11.990	11.656	4.010	3.740	3.410
THE WINDERMERE 40' X 12' 2 BED	12.630	12.300	3.950	3.680	3.410
THE WINDERMERE 40' X 12' 3 BED	12.630	12.300	3.950	3.680	3.410
THE WINDERMERE 40' X 13' 2 BED	12.630	12.300	4.250	3.980	3.410
THE WINDERMERE 40' X 13' 3 BED	12.630	12.300	4.250	3.980	3.410
THE INGLETON 40' X 12' 2 BED	12.690	12.360	3.950	3.680	3.410
THE INGLETON 41' X 12' 3 BED	13.000	12.670	3.950	3.680	3.410
THE INGLETON 40' X 13' 2 BED	12.690	12.360	4.250	3.980	3.410
THE INGLETON 41' X 13' 3 BED	13.000	12.670	4.250	3.980	3.410
THE LANGDALE 40' X 13' 2 BED	12.700	12.360	4.250	3.980	3.410
THE LANGDALE 41' X 13' 3 BED	13.000	12.670	4.250	3.980	3.410
THE AMBLESIDE 40' X 13' 2 BED	12.581	12.301	4.250	3.980	3.410
THE AMBLESIDE 41' X 13' 3 BED	12.863	12.570	4.250	3.980	3.410
THE AMBLESIDE PREMIER 40' X 14' 2 BED	12.581	12.301	4.580	4.310	3.446
THE AMBLESIDE PREMIER 41' X 14' 3 BED	12.863	12.570	4.580	4.310	3.446
THE BEAUMONT LODGE 43' X 14' 2 BED	13.630	13.300	4.580	4.310	3.678
THE WESTWOOD LODGE 44' X 14' 2 BED	13.740	13.610	4.680	4.410	3.973

### KEY TO EXTERNAL DIMENSIONS.



- A** Overall length excluding detachable towbar (+/-50mm)
- B** Body length at floor level (+/-10mm)
- C** Overall width including gutters & downpipes (+/-10mm)
- D** Width at floor level (+/-10mm)
- E** Height to apex of roof (+/-50mm)



**OPTIONAL WINTER PACKS**  
See Page 86

### OPTIONAL WINTER PACKS

Winter packs keep your holiday home cosy during colder spells. To ensure your holiday home stays cosy and warm in the winter months, we offer the choice of two winter packs.

#### Winter Premium:

- 'Low E' PVCu Thermaglass double glazing
- Domestic central heating
- Exterior light
- Extra insulation

#### Winter Electric:

- 'Low E' PVCu Thermaglass double glazing
- 300W heaters in all bedrooms
- S-shaped towel rail in bathroom
- Exterior light
- Extra insulation



**OPTIONAL Residential Specification BS3632**  
See Page 86

### OPTIONAL RESIDENTIAL SPECIFICATION BS3632

For 2024, certain models are available to be built to BS3632 residential specification. Where a BS3632 build is chosen, the following is included within the option as standard:

- Fully galvanised heavy-duty chassis
- Residential levels of ventilation
- 'Low E' Thermaglass double glazing fitted to all doors and windows
- Fully condensing boiler gas central heating
- Residential standard levels of insulation fitted to walls, floors and roof to meet required 'u' values
- Sound insulation to the exterior to meet required sound reduction values

BED SIZE	Master Bed	Twin Bed 1	Twin Bed 2	Twin Bed 3	Twin Bed 4
THE COWORTH 28' X 10' 2 BED	1905 X 1370	1905 X 610	1905 X 610	N/A	N/A
THE COWORTH 32' X 10' 2 BED	1905 X 1370	1905 X 610	1905 X 610	N/A	N/A
THE COWORTH 36' X 10' 3 BED	1905 X 1370	1905 X 610	1905 X 610	1905 X 610	1905 X 610
THE COWORTH 28' X 12' 2 BED	1905 X 1525	1905 X 760	1905 X 760	N/A	N/A
THE COWORTH 32' X 12' 2 BED	1905 X 1370	1905 X 760	1905 X 760	N/A	N/A
THE COWORTH 36' X 12' 2 BED	1905 X 1525	1905 X 760	1905 X 760	N/A	N/A
THE COWORTH 36' X 12' 3 BED	1905 X 1525	1905 X 686	1905 X 686	1905 X 610	1830 X 610
THE COWORTH 39' X 12' 3 BED	1905 X 1525	1905 X 686	1905 X 686	1905 X 686	1905 X 686
THE KESWICK 28' X 10' 2 BED	1905 X 1370	1830 X 610	1830 X 610	N/A	N/A
THE KESWICK 32' X 10' 2 BED	1905 X 1525	1830 X 686	1830 X 686	N/A	N/A
THE KESWICK 36' X 10' 3 BED	1830 X 1525	1905 X 610	1905 X 610	1905 X 610	1905 X 610
THE KESWICK 28' X 12' 2 BED	1905 X 1370	1830 X 686	1830 X 686	N/A	N/A
THE KESWICK 32' X 12' 2 BED	1905 X 1525	1905 X 686	1905 X 686	N/A	N/A
THE KESWICK 36' X 12' 2 BED	1905 X 1525	1905 X 686	1905 X 686	N/A	N/A
THE KESWICK 36' X 12' 3 BED	1905 X 1370	1905 X 686	1905 X 686	1905 X 610	1905 X 610
THE KESWICK 39' X 12' 3 BED	1905 X 1370	1905 X 686	1905 X 686	1905 X 610	1830 X 610
THE WIMBLEDON 36' X 12' 2 BED	1905 X 1525	1905 X 686	1905 X 686	N/A	N/A
THE WIMBLEDON 38' X 12' 2 BED	1905 X 1525	1905 X 686	1905 X 686	N/A	N/A
THE WIMBLEDON 40' X 12' 3 BED	1905 X 1525	1905 X 686	1905 X 686	1905 X 610	1905 X 610
THE ST DAVID 37' X 12' 2 BED	1905 X 1525	1905 X 686	1905 X 686	N/A	N/A
THE ST DAVID 38' X 12' 2 BED	1905 X 1525	1905 X 686	1905 X 686	N/A	N/A
THE ST DAVID 39' X 12' 3 BED	1905 X 1370	1905 X 686	1905 X 686	1905 X 610	1830 X 610
THE BEVERLEY 36' X 12' 2 BED	1905 X 1525	1905 X 686	1905 X 686	N/A	N/A
THE BEVERLEY 39' X 12' 2 BED	1905 X 1525	1905 X 686	1905 X 686	N/A	N/A
THE BEVERLEY 40' X 12' 3 BED	1905 X 1370	1905 X 686	1905 X 686	1830 X 686	1830 X 686
THE DERWENT WCF 38' X 12' 2 BED	1905 X 915 (x2)	1905 X 915	1905 X 915	N/A	N/A
THE WINDERMERE 40' X 12' 2 BED	1905 X 1525	1905 X 686	1905 X 686	N/A	N/A
THE WINDERMERE 40' X 12' 3 BED	1905 X 1370	1905 X 686	1905 X 686	1905 X 686	1830 X 686
THE WINDERMERE 40' X 13' 2 BED	1905 X 1525	1905 X 760	1905 X 760	N/A	N/A
THE WINDERMERE 40' X 13' 3 BED	1905 X 1525	1905 X 760	1905 X 760	1905 X 686	1830 X 686
THE INGLETON 40' X 12' 2 BED	1905 X 1525	1905 X 686	1905 X 686	N/A	N/A
THE INGLETON 41' X 12' 3 BED	1905 X 1370	1905 X 686	1905 X 686	1905 X 686	1905 X 686
THE INGLETON 40' X 13' 2 BED	1905 X 1525	1905 X 760	1905 X 760	N/A	N/A
THE INGLETON 41' X 13' 3 BED	1905 X 1370	1905 X 760	1905 X 760	1905 X 686	1905 X 686
THE LANGDALE 40' X 13' 2 BED	1905 X 1525	1905 X 760	1905 X 760	N/A	N/A
THE LANGDALE 41' X 13' 3 BED	1905 X 1370	1905 X 760	1905 X 760	1905 X 686	1905 X 686
THE AMBLESIDE 40' X 13' 2 BED	1905 X 1525	1905 X 760	1905 X 760	N/A	N/A
THE AMBLESIDE 41' X 13' 3 BED	1905 X 1370	1905 X 760	1905 X 760	1905 X 686	1905 X 686
THE AMBLESIDE PREMIER 40' X 14' 2 BED	1905 X 1525	1905 X 915	1905 X 915	N/A	N/A
THE AMBLESIDE PREMIER 41' X 14' 3 BED	1905 X 1370	1905 X 915	1905 X 915	1905 X 686	1905 X 686
THE BEAUMONT LODGE 43' X 14' 2 BED	1905 X 1525	1905 X 915	1905 X 915	N/A	N/A
THE WESTWOOD LODGE 44' X 14' 2 BED	1905 X 1525	1905 X 915	1905 X 915	N/A	N/A

# Peace of mind

The level of care, craftsmanship and attention to detail that goes into each holiday home we build is something we pride ourselves on.

That's why we insist on providing warranties that offer unrivalled protection because, in the unlikely event that something does go wrong, both our reputation for quality and our commitment to you are our priority.

It's this combination of uncompromising quality, stringent checks and customer-focused care that has seen us become the UK's best-loved holiday home manufacturer, giving you complete peace of mind from start to finish.

From the moment you take ownership of your ABI, everything inside is covered by a 12-month parts and labour warranty as standard. But it doesn't end there...



### 3 YEAR WARRANTY\*

After the first year, you'll enjoy a further 24 months' cover on:

- Furniture manufactured and fitted by us
- Shower cubicle, topper and door
- Taps, sanitaryware and baths
- Radiators, internal doors and door handles
- Gutters, downpipes and cladding
- Sockets and switches
- Kitchen sink
- Dining table and chairs



### 5 YEAR WARRANTY\*

After the first year, you'll enjoy an extra 48 months' structural warranty on:

- Chassis, roof, walls, ceiling, floors and external windows and doors



### 10 YEAR WARRANTY\*

In addition to all this, fully galvanised heavy-duty chassis systems are covered by a full 10-year warranty from the date of purchase

The content of the brochure is as accurate as possible from information available at the time of going to print. ABI (UK) Ltd. reserves the right to alter specifications, prices and model ranges as materials and conditions demand and can accept no responsibility for discrepancies between this information and subsequent models. Illustrations do not reflect any individual holiday homes. All ABI holiday homes are built to comply with the relevant codes of practice required by the National Caravan Council Certification Scheme (EN1647) and therefore are designed for holiday use and not full time residential occupancy. Holiday homes built to BS3632 standard are for residential use. ABI (UK) Ltd. advise you to contact your nearest dealership to check features, options, specifications and availability prior to ordering. \*Terms, conditions and exclusions apply. Please refer to the ABI Warranty booklet supplied with your ABI holiday home.

# THE FINISHING TOUCH

... beautiful, practical, low maintenance decking from AB Sundecks



Make the most of your outdoor space with AB Sundecks. Choose a deck that means you won't have to spend time on tedious, expensive maintenance.

A beautiful deck really enhances your holiday home. It provides a safe playground for children, a secure place for pets or simply somewhere to sit and relax.

Our decks are built on steel sub frames using high quality galvanised steel and reinforced with PVC joints and our deckboards are completely wood-free meaning there is no rotting or splitting, inside or out. This eradicates the need for the endless maintenance and repairs associated with traditional timber decking.

Our strong, slip resistant PVC boarding is weather-proof and low maintenance and is great for use in gardens, restaurant terracing, holiday home balconies and virtually every outdoor, underfoot project and every deck is perfectly co-ordinated to the design you choose and matching accessories provide the ideal finishing touches.

Our long-life, easy-care decks make a delightful addition to any outdoor space, a space that you will enjoy for years and years to come.

### Safety features:

- Class 1Y fire rated
- Self extinguishing
- Steel reinforced
- BS Slip resistant
- BS Resilient
- BS Static Load Tested
- Water resistant



### Our many special features include:

- Bespoke Designs
- Exclusive Handrail options
- Built in Hot Tubs
- Robust Steel Sub Frame
- Exclusive Deck Boards
- Lighting Options
- Access Ramps
- Glass Balustrading
- Storage Hatches
- Easy Access Steps
- Locking Gates
- Ten Year Guarantee

w | [www.absundecks.co.uk](http://www.absundecks.co.uk) e | [info@absundecks.co.uk](mailto:info@absundecks.co.uk) FREE Brochure Call 01204 709029



**VELUX®**

## Let there be light.

Open up views to the outdoors, while welcoming in daylight and fresh air with VELUX® roof windows.



WeShare Image 116626-01

There are so many benefits to VELUX roof windows, especially where space is at a premium.

VELUX roof windows make it possible to maximise natural light indoors. Typically positioned overhead with the glass facing upwards, roof windows capture the sun's full light whilst also freeing up wall-space.

Did you know roof windows can also change how a space feels? Roof windows not only invite in daylight and fresh air, but their clever positioning also allows stale cooking smells and humidity to escape. Making them ideal for busy areas, kitchen spaces, and en suites. Enjoy a feeling of freshness and connection to nature by introducing roof windows to your holiday home.



- Choose from **solar, electric, or manual** roof window operation.
- Explore the full range of **VELUX blinds and shutters** to enhance and personalise your holiday retreat.
- Enjoy **80 years** of roof window innovation, supported by a 10-year guarantee on roof windows and 3-year guarantee on electrical components and blinds.

**Include a VELUX roof window in your future holiday home. Compatible with multiple ABI home styles.**

Do you need advice choosing your VELUX products? Contact the VELUX Advisory team for friendly advice and design recommendations.

**Tel: 01592 778883**  
**Email: [daylight@velux.co.uk](mailto:daylight@velux.co.uk)**

