

# Holiday Homes

*Collection 2024*



**ATULAS**  
LEISURE HOMES



*#WhereMemoriesAreMade*



Culzean Bay Holiday Park



# For 50 years the Atlas brand has led the way in holiday home and lodge design.

Driven by strong interiors and conceptual design cues, structural integrity and a reputation for delivering a high quality product has established Atlas as a market leader.

The new 2024 range features contemporary fabrics, stylish fittings and an array of practical features, all complemented by stunning exterior appearances ensuring that we have something to suit all tastes and budgets.

Choosing a leisure home is the start of an exciting journey. You're investing in yourself, your family, and your future by picking out a home from home, at a destination you want to fall in love with, time and time again.

**Let Atlas be a part of your journey, let us help you along the way...**

## Contents

About us	4		
Our collection	6		
Buying a holiday home	8		
<b>Image 10</b>	<b>10</b>	Standard features & options	76
<b>Status 6</b>	<b>18</b>	External dimensions	78
<b>Debonair 10</b>	<b>26</b>	Bedsizes & mattresses	80
<b>Heritage 5</b>	<b>36</b>	Exterior finish options	82
<b>Sahara 3</b>	<b>44</b>	Ultrawarm	84
<b>Chorus 7</b>	<b>52</b>	Warranty	85
<b>Mirage 6</b>	<b>60</b>	Main dealerships	86
<b>Festival 5</b>	<b>68</b>	FAQs	87

## About us



## Making your home away from home something special

High quality materials and exquisite hand craftsmanship are the staples of our manufacturing process. We are very proud of the quality of our work and we genuinely enjoy what we do. What matters is the craft and attention that we bring to each project.

With an extensive range of holiday homes and lodges, you're sure to discover the perfect model for you and your family here at Atlas!

At Atlas we pride ourselves on delivering first-class products and first-class service. Designed from the outset with you in mind, we work together to ensure that you receive the best possible holiday home in every way, constructed to the highest standards of design, character and finish.

With a keen eye for detail, the Atlas team takes inspiration from innovative construction ideas to generate practical and beautiful homes, making your holiday experiences complete.



**Made to  
last by our  
own highly  
skilled  
craftsmen  
– using  
only  
the best  
materials**



## Our Holiday Home collection



## Leading the way in design and build

With the very highest quality, stunning exteriors and beautifully appointed interiors – you're guaranteed to be able to find your dream holiday home in the 2024 collection.

At Atlas we understand that buying a leisure home is an investment, so we only build holiday homes that will exceed your expectations. From the moment you take ownership of your Atlas holiday home, you will start creating memories to last a lifetime.

### **A home away from home**

With a long-established reputation for outstanding quality, each holiday home features a handpicked and bespoke selection of some of the finest contemporary fabrics, stylish fittings and equipment as standard.

And because the little things can make all the difference to your stay, optional extras including American style fridges and wine chillers make Atlas models truly a home from home experience.

### **Atlas is known for value and innovation**

If you invest in an Atlas holiday home, you can be confident that not only do you own the best in design, innovation and value for money, but have also made a contribution to environmental sustainability.



### **The Luxury Lodge collection**

**Even more models to choose from in our range of lodges**

The Atlas collection also includes 6 luxury lodges, including the flagship Debonair Lodge, and family favourite Sherwood Lodge.





IMAGE 10



STATUS 6



DEBONAIR 10



HERITAGE 5



SAHARA 3



CHORUS 7



MIRAGE 6



FESTIVAL 5



# Wondering where to start on your journey to holiday home ownership?

*#WhereMemoriesAreMade*

Photo credit:  
Pettycur Bay Caravan Park



## Here are some simple steps to help you on your way to creating a lifetime of special memories.



### Browse our range

Browse the Atlas range of leisure homes in this brochure or check out [www.atlasleisurehomes.co.uk](http://www.atlasleisurehomes.co.uk) for interactive tours of each Atlas Leisure Home model.

#### Things to consider...

What size home?  
How many bedrooms?  
Where do you require the most space?  
What appliances would you like?

### Pick a location

Think about where in the UK you would like your leisure home, you can find a park or dealer at [www.atlasleisurehomes.co.uk/find-a-dealer](http://www.atlasleisurehomes.co.uk/find-a-dealer)

#### Things to consider...

Travel time from own home?  
Coastal or inland park?  
Child-friendly or adults only?  
Pet-friendly?  
12-month holiday park?



### Choose a pitch

Once you have chosen which holiday park you would like your leisure home located at, you will need to choose a pitch at that park.

#### Things to consider...

What view would you like?  
Close-by park amenities?



### Place your order

When you're ready to place an order for your new leisure home, contact your chosen holiday park or dealership.



### Build your dream home

We begin manufacturing your leisure home.





# Image 10

The Image 10 has all the charm of a traditional holiday home, but with modern features throughout.

The entrance is welcoming with views of the galley kitchen, stylish dining area and spacious lounge.

Feature fire and attractive built in shelving creates a quaint and homely feel.

1 LAYOUT AVAILABLE | Sleep 6



Explore the Image 10 via the 3D immersive tour, by scanning the QR code.



# Living room



FEATURE WALL WITH AN ELECTRIC FIRE SURROUND

LUXURIOUS 3-SEATER SOFA WITH TWO ARMCHAIRS

SLIDING PATIO DOORS





# Kitchen



INTEGRATED FRIDGE FREEZER

BLACK COMPOSITE SINK AND MIXER TAP





## Bedrooms

BUILT IN DRESSING TABLE  
WITH STORAGE STOOL  
STYLISH PENDANT LIGHTS





## Bathroom & ensuite



2 ENSUITES

JACK & JILL BATHROOM

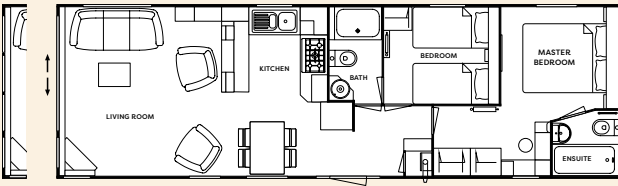


Find more information,  
see more pictures and view  
more floorplans by scanning  
the QR code opposite





## Floor plans



41 x 12' 6" | 2 bedroom \*model in photographs



## Standard features

### LOUNGE

Freestanding suite (with pull out bed)

Two arm chairs

Lounge scatter cushions

Lounge footstool

Vertical blinds to front aspect

Coffee table

### KITCHEN

Integrated fridge freezer

Integrated microwave

Electric oven and grill

5 burner hob with electric extractor hood

Soft-close hinges on doors

Velux roof light

### DINING AREA

Freestanding dining table and chairs

### BATHROOM(S)

Ensuite bath/shower room to bedrooms

Towel radiator

### MASTER BEDROOM

Overbed reading lights

TV points to master (with signal booster)

Kingsize lift-up bed

### TWIN BEDROOM(S)

3ft single beds

TV point (with signal booster)

Overbed reading lights

### THROUGHOUT

Central Heating

Extra insulation

Sockets with USB port

Low energy lighting

### EXTERIOR

Pre-galvanised chassis

Front sliding patio doors

Downlights x2

Graphite PVC double glazing

## Popular options

Fully galvanised chassis

Environmental colours

Canixel cladding coloured windows

Timber cladding oak windows

Integrated dishwasher\*

Integrated washer/dryer\*

Integrated washing machine\*

7 bottle wine cooler

Wall mounted TV point in lounge

Gazunder twin bed

Standard bedding set

Deluxe bedding set

Shower over bath

Shower cubicle in lieu of bath

\*Only 1 full size appliance per model



Please see the matrix on page 76 for a comprehensive list of options.







# Status 6

The Status 6 offers a unique open-plan living space with an eye-catching architectural feature wall.

With contemporary soft furnishings, large free standing circular table and 4 dining chairs, this holiday home offers something bold and new!

2 LAYOUTS AVAILABLE | Sleep 4 -6



Explore the Status 6 via the 3D immersive tour, by scanning the QR code.





## Living room



LUXURY OPEN PLAN LIVING SPACE

VERTICAL BLINDS AT THE FRONT END OF THE HOLIDAY HOME

LARGE SOFA AND TWO SWIVEL CHAIRS

PARTITION WALL







## Kitchen



INTEGRATED FRIDGE/FREEZER

FREESTANDING DINING TABLE

# Bedroom

**KING SIZE LIFT UP BED**  
**BUILT IN WARDROBES AND**  
**STORAGE THROUGHOUT**  
**THE MASTER BEDROOM**





## Bathroom & ensuite

**BATH IN THE ENSUITE**

**MAIN BATHROOM FEATURES  
A VANITY UNIT WITH MIXER TAP  
AND MOUNTED MIRROR**

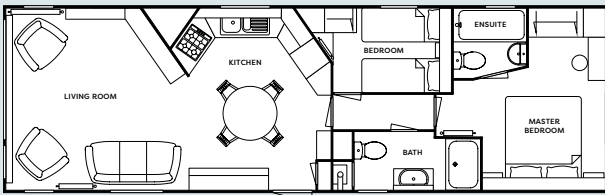


▶ Find more information,  
see more pictures and view  
more floorplans by scanning  
the QR code opposite

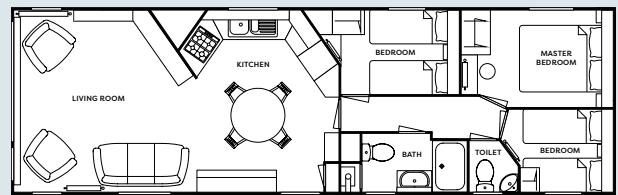




## Floor plans



40 x 12' 6" | 2 bedroom \*model in photographs



40 x 12' 6" | 3 bedroom



## Standard features

### LOUNGE

Freestanding suite (with pull out bed)  
Two swivel chairs  
Lounge scatter cushions  
Vertical blinds to front aspect  
Coffee table  
Feature electric fire

### KITCHEN

Integrated fridge/freezer  
Integrated microwave  
High level electric oven and grill  
4-ring hob with electric extractor hood  
Soft-close hinges on doors  
Kitchen Dresser

### DINING AREA

Freestanding circular table and chairs

### BATHROOM(S)

Ensuite bathroom (2 bedroom model)  
Extractor fan to main bathroom

### MASTER BEDROOM

Overbed reading lights  
TV point  
Lift-up storage double bed  
Soft-close hinges on doors

### THROUGHOUT

Low energy lighting  
Socket with USB port

## Popular options

Winter warm pack  
Ultrawarm insulation  
Front French doors  
Side French doors  
Fully galvanised chassis  
Pre galvanised chassis  
Upgrade to graphite windows  
Environmental colours  
Environmental colours c/w graphite win/doors  
Rigid PVC cladding white windows  
Rigid PVC cladding colour windows  
Canexel cladding white windows  
Canexel cladding coloured windows  
Timber cladding oak windows  
Integrated dishwasher\*  
Integrated washer/dryer\*  
Integrated washing machine\*  
Lounge footstool  
Wall mounted TV point in lounge  
Plinth heaters  
Heated towel rails  
Gazunder twin bed  
TV point to twin bedroom  
Bedding set – standard 2 bedroom  
Bedding set – deluxe 2 bedroom  
Shower over bath\*\*  
Additional single socket  
Additional double socket  
Shaver socket  
**Additional costs**  
Trace heating

\*Only 1 full size integrated appliance per model  
\*\*2 bed model only

### WINTER WARM PACK

#### to include

Central heating  
Double glazing  
Extra insulation

▶ Please see the matrix on page 76 for a comprehensive list of options.







# Debonair 10

The Debonair 10 is as popular with customers as it is beautifully designed.

With a farmhouse feel throughout, natural colour palette and cheerful demeanour, you will love staying in this holiday home time and time again.

The living area features 2 and 3 seat standalone sofas, log-burner style electric fire and attractive dining suite.

8 LAYOUTS AVAILABLE | Sleep 6 -8



Explore the Debonair 10 via the 3D immersive tour, by scanning the QR code.





## Living room

LOG BURNER STYLE ELECTRIC FIRE

FREE STANDING SOFAS







**Kitchen  
& dining**



**FULLY FITTED FARMHOUSE  
STYLE KITCHEN**  
**INTEGRATED OVEN  
AND FRIDGE/FREEZER**





## Bedrooms

KING SIZE BED

BUILT IN WARDROBE  
AND OVER BED STORAGE







# Bathrooms

ENSUITE



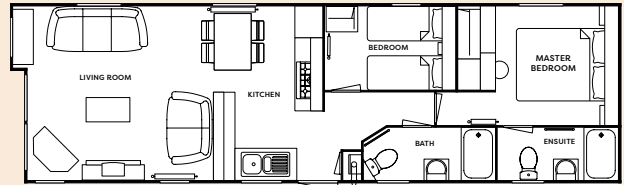
▶ Find more information, see more pictures and view more floorplans by scanning the QR code opposite



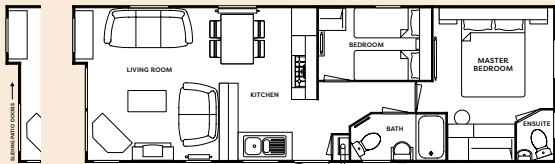




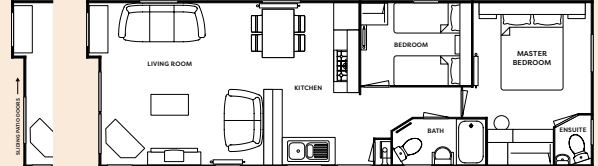
## Floor plans



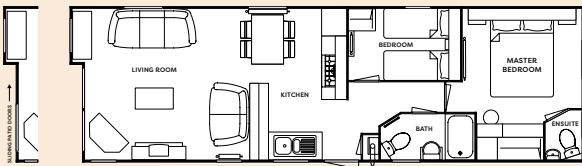
40 x 12 | 2 bedroom \*model in photographs



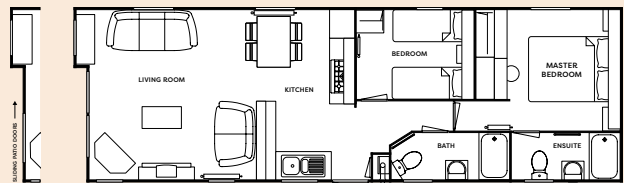
36 x 12 | 2 bedroom



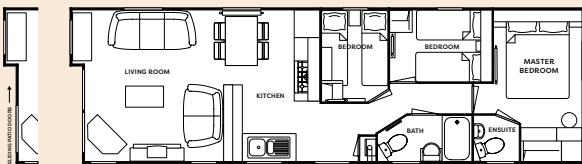
38 x 13 | 2 bedroom



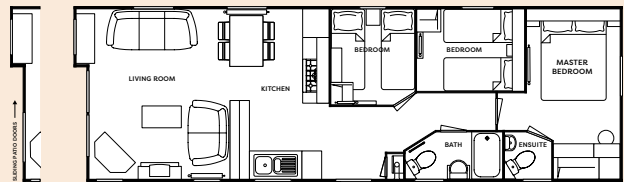
38 x 12 | 2 bedroom



40 x 13 | 2 bedroom



38 x 12 | 3 bedroom



40 x 13 | 3 bedroom



Explore the Debonair 10 via the 3D immersive tour, by scanning the QR code.



# Debonair 10

## Standard features

### LOUNGE

Freestanding three-seater suite (and pull out bed)

Freestanding two-seater suite with stag bolster cushions

### KITCHEN

Integrated fridge/freezer

Integrated electric oven and grill

5 ring gas hob with electric extractor hood

Appliances shelf and socket

### DINING AREA

Freestanding table and chairs

### BATHROOM(S)

Ensuite to master bedroom

Exterior fan in main bathroom

### MASTER BEDROOM

Kingsize bed (2 bed models only)

Overbed reading lights

### THROUGHOUT

Low energy lighting

Socket with USB port

Designer interior lighting

## Popular options

Winter warm pack

Ultrawarm insulation

Front sliding doors

Fully galvanised chassis

Pre galvanised chassis

Upgrade to graphite windows

Environmental colours

Environmental colours complete with graphite windows & doors

Rigid PVC cladding white windows

Rigid PVC cladding colour windows

Canixel cladding white windows

Canixel cladding coloured windows

Timber cladding oak windows

Integrated microwave

Integrated dishwasher\*

Integrated washer/dryer\*

Integrated washing machine\*

Wine cooler in 13ft models

Coffee table

Lounge footstool

Wall mounted TV point in lounge

Plinth heaters & heated towel rails

Lift up double bed (gas strut) base

Gazunder twin bed

TV points & co-ax to bedrooms

Standard bedding set

Deluxe bedding set

\*Only 1 full size appliance per model

### WINTER WARM PACK

#### to include

Central heating

Double glazing

Extra insulation

▶ Please see the matrix on page 76 for a comprehensive list of options.

# Debonair (access) 10

## Floor plans



40 x 12 | 2 bedroom

▶ Find more information, see more pictures and view more floorplans by scanning the QR code opposite



Explore the Debonair (Access) 10 via the 3D immersive tour, by scanning the QR code.





# Debonair (access) 10



## Standard features

### LOUNGE

Freestanding L-shape suite (with pull out bed)  
Lounge scatter cushions

### KITCHEN

Integrated fridge/freezer  
Electric oven and grill  
5 ring hob with electric extractor hood  
Low height work surfaces  
Appliance shelf and socket

### DINING AREA

Freestanding table and chairs

### BATHROOM(S)

Exterior fan  
Full wet room facility with support handles

### MASTER BEDROOM

Access hoist above bed  
Overbed reading lights

### TWIN BEDROOM(S)

3ft single mattresses

### THROUGHOUT

Sockets with USB port  
Low energy lighting  
Wide, low threshold entrance door  
Wide corridor access

## Popular options

Winter warm pack

Ultrawarm insulation

Fully galvanised chassis

Pre galvanised chassis

Upgrade to graphite windows

Environmental colours

Environmental colours complete with graphite windows & doors

Rigid PVC cladding white windows

Rigid PVC cladding colour windows

Canaxel cladding white windows

Canaxel cladding coloured windows

Timber cladding oak windows

Integrated microwave

Integrated dishwasher\*

Integrated washer/dryer\*

Integrated washing machine\*

Coffee table

Lounge footstool

Plinth heaters & heated towel rails

Lift up double bed (gas strut) base

TV points & co-ax to bedrooms

Standard bedding set

Deluxe bedding set

\*Only 1 full size appliance per model

### WINTER WARM PACK

#### to include

Central heating

Double glazing

Extra insulation





# Heritage 5

The Heritage 5 is a firm favourite in the Atlas range, with a classy and chic aesthetic.

The colour palette is fresh, creating a light and airy living space.

The freestanding 2 and 3 seater sofa feature deep button roll arms, creating a sophisticated look.

5 LAYOUTS AVAILABLE | Sleep 6 -8



Explore the Heritage 4 via the 3D immersive tour, by scanning the QR code.



# Living room & dining

ASPECT WINDOWS

LOG BURNER STYLE FIRE CABINET

FREESTANDING SOFAS AND DINING SET





# Kitchen



STUNNING FJORD GREEN CABINETS





## Bedroom



LARGE DRESSING TABLE IN  
MASTER BEDROOM  
ENSUITE



## Bathroom & ensuite



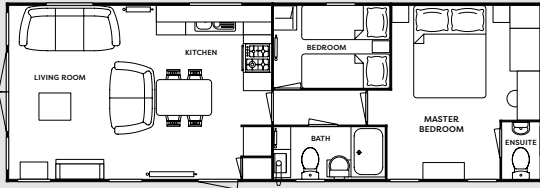
▶ Find more information, see more pictures and view more floorplans by scanning the QR code opposite



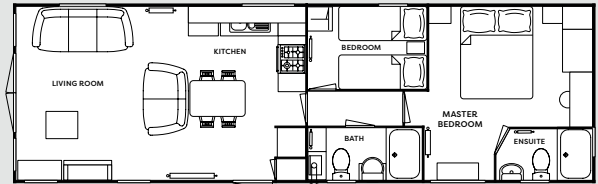




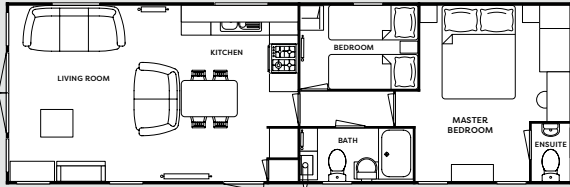
## Floor plans



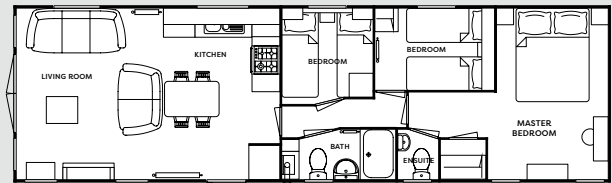
36 x 12 | 2 bedroom



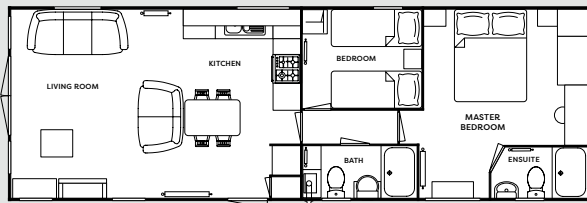
39 x 12 | 2 bedroom \*model in photographs



38 x 12 | 2 bedroom



40 x 12 | 3 bedroom



39 x 13 | 2 bedroom (2 showers)

## Standard features

### LOUNGE

Freestanding three-seater suite with deep button arms (pull out bed)

Freestanding two-seater suite with deep button arms

Feature aspect windows

Electric fire

Feature fire cabinet

Socket with USB port

Wall mounted TV point

### KITCHEN

Integrated fridge freezer

Electric oven and grill

4 ring hob with electric extractor hood

Socket with USB port

### DINING AREA

Freestanding dining table and chairs

Feature dining pendant lighting

### BATHROOM(S)

Ensuite bathroom

Extractor fan to main bathroom/shower room

### MASTER BEDROOM

TV point

Overbed reading lights

Socket with USB port

### THROUGHOUT

Low energy lighting

Carpet with underlay

### EXTERIOR

Matte finish châteaux grey cladding

Exterior light

## Popular options

Winter warm pack

Ultrawarm insulation

Front French doors

Fully galvanised chassis

Pre galvanised chassis

Upgrade to graphite windows

Environmental colours

Environmental colours complete with graphite windows & doors

Rigid PVC cladding white windows

Rigid PVC cladding colour windows

Canoxel cladding white windows

Canoxel cladding coloured window

Timber cladding oak windows

Integrated microwave

Integrated dishwasher\*

Integrated washer/dryer\*

Integrated washing machine\*

Wine cooler (13ft models only)

Coffee table

Lounge footstool

Lounge scatter cushions

Plinth heaters & heated towel rails

Lift up double bed (gas strut) base

Gazunder twin bed

TV point to twin bedroom

Standard bedding set

Deluxe bedding set

\*Only 1 full size appliance per model

### WINTER WARM PACK

#### to include

Central heating

Double glazing

Extra insulation



Please see the matrix on page 76 for a comprehensive list of options.







# Sahara 3

The Sahara 3 features a rich textured wood finish throughout, which creates a homely and snug feel.

The living area is modern yet practical with numerous storage solutions, the dining area has freestanding table and 4 chairs, with feature lighting above.

4 LAYOUTS AVAILABLE | Sleep 6 -8



Explore the Sahara 3 via the 3D immersive tour, by scanning the QR code.





## Living room

- TEXTURED WOOD FINISH WITH PEWTER FLECKS THROUGH
- SOFT L-SHAPED SEATING
- USEFUL SEATING AT THE ENTRANCE







## Kitchen



**BLACK COMPOSITE SINK**

**INTEGRATED ELECTRIC OVEN**

**70/30 FRIDGE/FREEZER**





# Bedrooms

- KING SIZE BED
- DRESSING TABLE
- ENSUITE



## Bathroom & ensuite

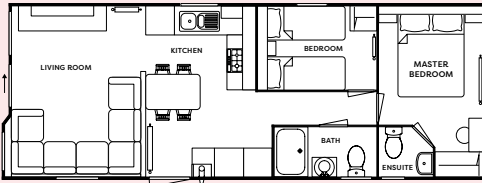


▶ Find more information,  
see more pictures and view  
more floorplans by scanning  
the QR code opposite

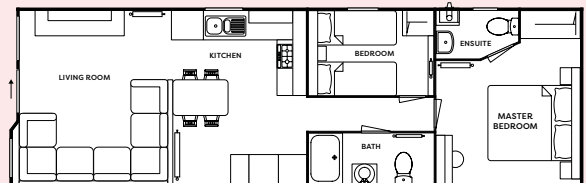




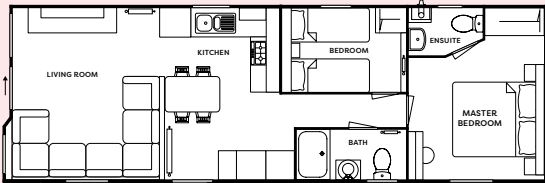
## Floor plans



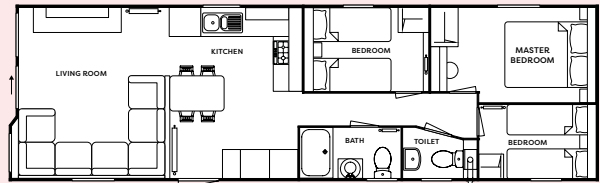
32 x 12 | 2 bedroom



38 x 12 | 2 bedroom



36 x 12 | 2 bedroom *\*model in photographs*



39 x 12 | 3 bedroom



## Standard features

### LOUNGE

L-shaped lounge seating (with pull out bed)

Sockets with USB port

Feature TV unit & fireplace

### KITCHEN

Feature entrance seating with coat hooks

Integrated electric oven and grill

4 ring gas hob with electric extractor hood

Integrated 70/30 fridge/freezer

Space for microwave

Black composite 1 bowl sink with matching tap

Sockets with USB port

### DINING AREA

Freestanding dining table and chairs

Feature dinette lighting

### BATHROOM(S)

Ensuite bathroom

Extractor fan in main bathroom

### MASTER BEDROOM

Wall mounted headboard

Feature wall lights

### THROUGHOUT

Low energy lighting

Feature textured wood finish throughout with pewter fleck

Voiles throughout

### EXTERIOR

Châteaux grey aluminium exterior cladding

Exterior light

## Popular options

Winter warm pack

Ultrawarm insulation

Front French doors

Fully galvanised chassis

Pre galvanised chassis

Upgrade to graphite windows

Environmental colours

Environmental colours complete with graphite windows & doors

Rigid PVC cladding white windows

Rigid PVC cladding colour windows

Canoxel cladding white windows

Canoxel cladding coloured windows

Timber cladding oak windows

Integrated microwave

Integrated dishwasher\*

Integrated washer/dryer\*

Integrated washing machine\*

Electric fire to lounge

Lounge footstool

Coffee table

Lounge scatter cushions

Wall mounted TV point in lounge

Plinth heaters & heated towel rails

Lift up double bed (gas strut) base

Gazunder twin bed

TV points & co-ax to bedrooms

Standard bedding set

Deluxe bedding set

\*Only 1 full size appliance per model

### WINTER WARM PACK

#### to include

Central heating

Double glazing

Extra insulation

▶ Please see the matrix on page 76 for a comprehensive list of options.





# Chorus 7

The Chorus 7 has everything you need for a family getaway.

The living area is well thought out, giving space for socialising, eating and cooking.

It also has some brilliant family friendly touches such as embedded placemats in the seating area, USB ports and practical storage solutions throughout.

4 LAYOUTS AVAILABLE | Sleep 6 -8



Explore the Chorus 6 via the 3D immersive tour, by scanning the QR code.







## Living room

OPEN PLAN LIVING AREA

BUILT IN SHELVING UNIT TO SEPARATE THE LIVING ROOM FROM THE ENTRANCE WAY

FEATURE CUP HOLDER ARM INSERT SOFA





## Kitchen

COPPER COLOURED GLASS  
SPLASH BACK

INTEGRATED FRIDGE/FREEZER







## Bedroom

**BUILT IN WARDROBES  
AND OVERBED STORAGE**







## Bathroom & ensuite

LARGE SHOWER CUBICLE IN THE  
MAIN BATHROOM

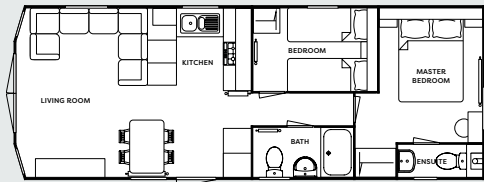


▶ Find more information,  
see more pictures and view  
more floorplans by scanning  
the QR code opposite

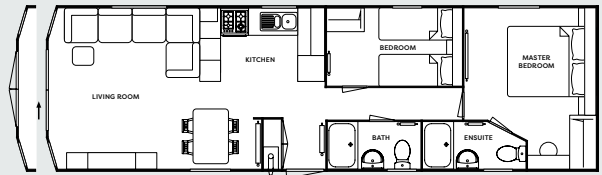




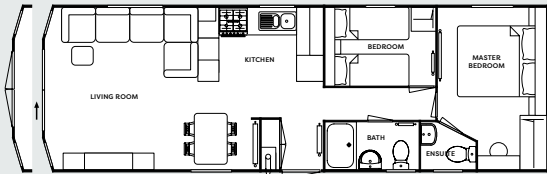
## Floor plans



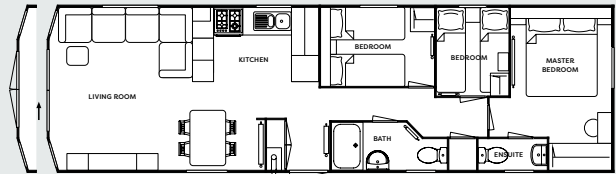
32 x 12 | 2 bedroom



39 x 12 | 2 bedroom (2 showers)  
\*model in photographs



36 x 12 | 2 bedroom



39 x 12 | 3 bedroom

## Standard features

### LOUNGE

L-shaped lounge seating  
(with pull out bed)

Lounge footstool

### KITCHEN

Integrated electric oven and grill

4 ring gas hob with electric  
extractor hood

Recirculating electric extractor hood

Integrated fridge freezer

Appliance shelf and socket

### DINING AREA

Freestanding dining table and chairs

### BATHROOM(S)

Ensuite to master bedroom

Extractor fan to main bathroom

### BEDROOM(S)

Feature strip lighting to bedrooms

### THROUGHOUT

Central heating

Extra insulation

Low energy lighting

Sockets with USB port

### EXTERIOR

PVC double glazing

## Popular options

Winter warm pack

Ultrawarm insulation

Front French doors

Fully galvanised chassis

Pre galvanised chassis

Upgrade to graphite windows

Environmental colours

Environmental colours complete  
with graphite windows & doors

Rigid PVC cladding white windows

Rigid PVC cladding colour windows

Canexel cladding white windows

Canexel cladding coloured windows

Timber cladding oak windows

Integrated microwave

Integrated dishwasher\*

Integrated washer/dryer\*

Integrated washing machine\*

Coffee table

Lounge scatter cushions

Lift up double bed (gas strut) base

Gazunder twin bed

TV points & co-ax to bedrooms

Hallway door

Standard bedding set

Deluxe bedding set

\*Only 1 full size appliance per model

### WINTER WARM PACK

#### to include

Central heating

Double glazing

Extra insulation



Please see the matrix on page 76 for a comprehensive list of options.





# Mirage 6

The Mirage 6 is a light and bright holiday home with all the space you and your family need.

The spacious lounge area has fixed L-shaped seating, a well positioned kitchen, and accompanying dining table and chairs which create a social and homely feel.

5 LAYOUTS AVAILABLE | Sleep 6 -8



Explore the Mirage 5 via the 3D immersive tour, by scanning the QR code.





# Living room

FIXED L SHAPE SEATING

ELECTRIC FLAME EFFECT FIRE







## Kitchen



**SPACIOUS FITTED KITCHEN**

**4 RING GAS HOB WITH  
ELECTRIC IGNITION**

**FIXED DINETTE WITH  
FREESTANDING CHAIRS**



# Bedroom

FIXED DRESSING TABLE  
WITH MIRROR

FIXED BEDSIDE SHELVING





## Bathroom

32FT & 35FT VERSIONS BENEFIT FROM AN ENSUITE



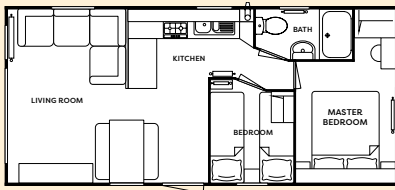
▶ Find more information, see more pictures and view more floorplans by scanning the QR code opposite



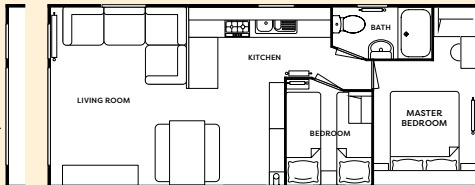




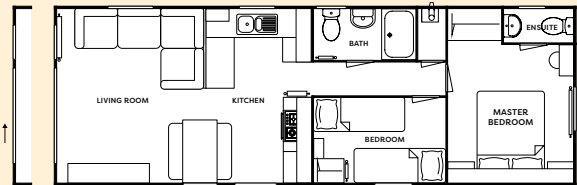
## Floor plans



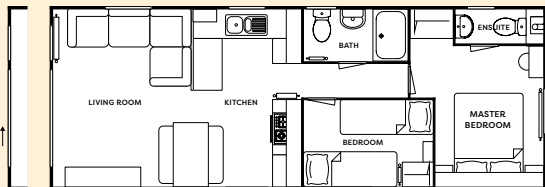
26 x 12 | 2 bedroom



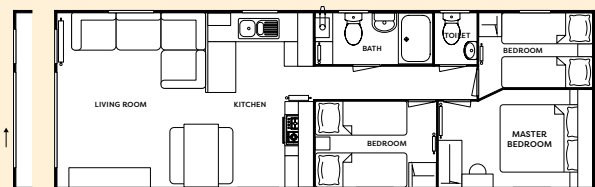
28 x 12 | 2 bedroom



35 x 12 | 2 bedroom **\*model in photographs**



32 x 12 | 2 bedroom



36 x 12 | 3 bedroom

## Standard features

### LOUNGE

L-shaped fixed lounge seating (with pull out bed)

Electric fire

### KITCHEN

Integrated electric oven and grill

4 ring gas hob

Appliance shelf and socket

### DINING AREA

Fixed dinette with 4 chairs

### BATHROOM(S)

Ensuite to master bedroom (32ft - 36ft models only)

Extractor fan to main bathroom

### THROUGHOUT

Low energy lighting

Sockets with USB port

### EXTERIOR

Exterior light

## Popular options

Winter warm pack

Ultrawarm insulation

Front sliding doors

Fully galvanised chassis

Pre galvanised chassis

Upgrade to graphite windows

Environmental colours

Environmental colours complete with graphite windows & doors

Rigid PVC cladding white windows

Rigid PVC cladding colour windows

Canexel cladding white windows

Canexel cladding coloured windows

Timber cladding oak windows

Freestanding fridge (under counter)

Integrated fridge/freezer

Integrated microwave

Integrated dishwasher

Integrated washer/dryer

Integrated washing machine

Re-circulating cooker extractor

Electric extractor hood

Freestanding table & chairs

Coffee table

Lounge scatter cushions

Wall mounted TV point in lounge

Plinth heaters & heated towel rails

Lift up double bed (gas strut) base

Gazunder twin bed

TV points & co-ax to bedrooms

Standard bedding set

Deluxe bedding set

\*Only 1 full size appliance per model

### WINTER WARM PACK

#### to include

Central heating

Double glazing

Extra insulation

▶ Please see the matrix on page 76 for a comprehensive list of options.





# Festival 5

The Festival 5 offers a cosy and neat, yet spacious holiday home.

Although the Festival is Atlas' entry level holiday home, unlike other offerings in the market within this price bracket, it has an impressive specification.

It features large corner seating, integrated TV cabinet, and fixed dinette with upholstered seating.

**6 LAYOUTS AVAILABLE** | Sleep 6 -8



Explore the Festival 4 via the 3D immersive tour, by scanning the QR code.



## Living room

FEATURE VAULTED ROOFLINE

L-SHAPED SEATING

INTEGRATED TV CABINET WITH STORAGE







## Kitchen

**FIXED DINETTE WITH UPHOLSTERED SEATING**

**RASPBERRY GLASS COOKER SPLASHBACK**

**OVEN AND GRILL INCLUDED AS STANDARD**





## Bedrooms & bathroom



**BUILT IN WARDROBE**

**FIXED BEDSIDE SHELVING**

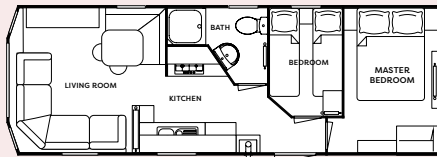
**SHOWER CUBICLE**



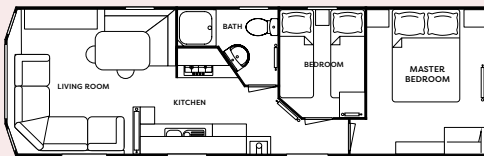




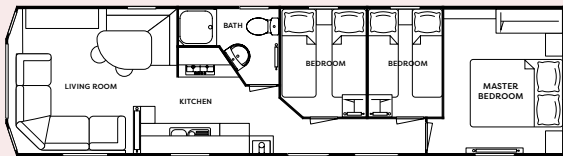
## Floor plans



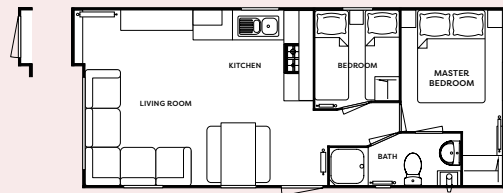
28 x 10 | 2 bedroom



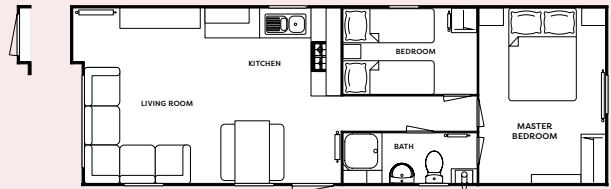
32 x 10 | 2 bedroom



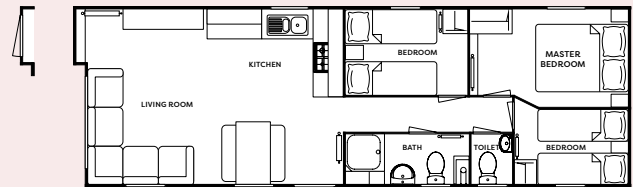
36 x 10 | 3 bedroom



28 x 12 | 2 bedroom



35 x 12 | 2 bedroom **\*model in photographs**



36 x 12 | 3 bedroom



## Standard features

### LOUNGE

L-shaped fixed lounge seating (with pull out bed)

Integrated TV cabinet and storage

### KITCHEN

Integrated electric oven and grill

4 ring gas hob with electric extractor hood

### DINING AREA

Fixed dinette with bench seating including upholstered seat pads

### BATHROOM(S)

Shower enclosure with thermostatically controlled shower

### BEDROOM(S)

Full height wardrobes

### THROUGHOUT

Gas powered water heater

### EXTERIOR

Feature vaulted roofline

## Popular options

Winter warm pack

Deluxe pack

Fully galvanised chassis

Pre galvanised chassis

Upgrade to graphite windows

Environmental colours

Environmental colours complete with graphite windows & doors

Rigid PVC cladding white windows

Rigid PVC cladding colour windows

Canexel cladding white windows

Canexel cladding coloured windows

Timber cladding oak windows

Exterior light

Freestanding fridge (under counter)

Coffee table

Wall mounted TV point in lounge

Plinth heaters & heated towel rails

Lift up double bed (gas strut) base

Gazunder twin bed

TV points & co-ax to bedrooms

Standard bedding set

Deluxe bedding set

\*Only 1 full size appliance per model

### WINTER WARM PACK

#### to include

Central heating

Double glazing

Extra insulation

### DELUXE PACK

#### to include (as full pack only)

Pre galvanised chassis

Feature fire in lounge

Scatter cushions to lounge x 3

USB socket in lounge

Freestanding dining chairs x 4

Upgraded lounge seating: including separate cushions, arm, and kickboards

Integrated microwave

Integrated fridge/freezer

Re-circulating extractor cooker hood

40mm worktops

Full splashback to cooker hob

Fully lined curtains on poles

Voiles to all windows

Underlay throughout

2-way light switch in master bedroom

Extra socket to bedrooms

Buttoned fabric headboards to all bedrooms

Bathroom extractor

Exterior light

Deluxe Pack items not available individually



Please see the matrix on page 76 for a comprehensive list of options.



Find more information, see more pictures and view more floorplans by scanning the QR code opposite





We also offer an exciting range of options, unique to each model, allowing you to make your holiday home truly individual.

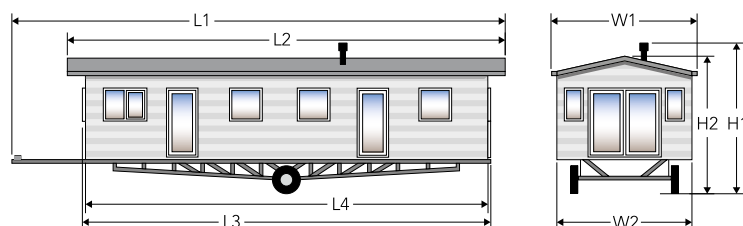
	IMAGE 10	STATUS 6	DEBONAIR 10	DEBONAIR 10 (ACCESS)	HERITAGE 5	SAHARA 3	CHORUS 7	MIRAGE 6	FESTIVAL 5
<b>LOUNGE &amp; DINING AREA</b>	Freestanding suite	●	●	●	●	×	×	×	×
	Fold out sofa bed	●	●	●	●	●	●	●	●
	Fixed dinette	×	×	×	×	×	×	●	●
	Freestanding dining table and four chairs	●	●	●	●	●	●	□	□
	Scatter cushions to lounge	●	●	●	●	□	□	□	□
	Electric fire	●	●	●	●	●	□	●	●
	Coffee table	●	●	□	□	□	□	□	□
	Provision for up to 32" wall mounted TV (does not include bracket)	□	□	□	□	●	□	□	□
<b>KITCHEN/ UTILITY ROOM</b>	Electric extractor hood	●	●	●	●	●	●	□	□
	4 burner hob with electronic ignition	×	×	×	×	●	●	●	●
	5 burner hob with electronic ignition	●	●	●	●	×	×	×	×
	Soft close hinges to doors throughout	●	●	●	●	×	×	×	×
	Integrated microwave oven	●	●	□	□	□	□	□	□
	Integrated dishwasher	□	□	□	□	□	□	□	□ <sup>1</sup>
	Integrated washing machine or washer dryer	□	□	□	□	□	□	□	□ <sup>1</sup>
	Integrated fridge/freezer	●	●	●	●	●	●	□	□
	Wine cooler	□	×	□ <sup>2</sup>	×	□ <sup>2</sup>	×	×	×
<b>BEDROOMS</b>	Freestanding metal bed frames with interior sprung mattresses	●	●	●	●	●	●	●	●
	Gas strut assisted metal lift up storage bed to main bedroom	●	●	□	□	□	□	□	□
	TV point to master bedroom	●	●	□	●	●	□	□	□
	TV point to twin bedroom	●	□	□	□	□	□	□	□
	'Gazunder' space saving bed (twin rooms only)	□	□	□	×	□	□	□	□
<b>BATHROOM/ SHOWER</b>	Soft close toilet seat(s)	●	●	●	●	●	●	●	●
	Extractor fan to main shower/bathroom	●	●	●	●	●	●	●	●
	Extractor fan to en-suite/ separate toilet	●	●	●	●	●	●	●	●
	Shower cubicle in lieu of bath	□	□	×	×	×	×	×	×
	Towel radiator as part of central heating package	●	●	□	□	□	□	□	□
	Shower over bath	□	□	×	×	×	×	×	×
	Shower in lieu of bath	□	□	×	×	×	×	×	×



# External dimensions

We have carefully listed the length, width and height across the range of our Atlas holiday home collection per model, overall base size and berth configurations.

Dimensions shown are for standard clad units only, please contact Atlas for dimensions of units with optional cladding.



Please note: The illustration is a guide for the external dimensions only.

MODEL	L1	L2	L3	L4	W1	W2	H1	H2
<b>IMAGE 10</b>								
<b>41 x 12-6</b>	13.677m	12.877m	12.527m	12.527m	4.113m	3.835m	3.430m	3.430m
2 bed / 6 berth	44' 10½"	42' 3"	41' 1"	41' 1"	13' 6"	12' 7"	11' 3"	11' 3"
<b>STATUS 6</b>								
<b>40 x 12-6</b>	13.402m	12.665m	12.352m	12.322m	4.113m	3.835m	3.400m	3.400m
2 bed / 6 berth	43' 11¾"	41' 6¾"	40' 6¼"	40' 5¼"	13' 6"	12' 7"	11' 2"	11' 2"
<b>40 x 12-6</b>	13.402m	12.665m	12.352m	12.322m	4.113m	3.835m	3.400m	3.400m
3 bed / 8 berth	43' 11¾"	41' 6¾"	40' 6¼"	40' 5¼"	13' 6"	12' 7"	11' 2"	11' 2"
<b>DEBONAIR 10</b>								
<b>36 x 12</b>	12.392m	11.575m	11.447m	11.147m	3.860m	3.680m	3.390m	3.390m
2 bed / 6 berth	40' 7¾"	37' 11¾"	37' 6¾"	36' 6¾"	12' 8"	12' 1"	11' 1½"	11' 1½"
<b>38 x 12</b>	13.092m	12.275m	12.147m	11.847m	3.860m	3.680m	3.390m	3.390m
2 bed / 6 berth	42' 11½"	40' 3¼"	39' 10¼"	38' 10½"	12' 8"	12' 1"	11' 1½"	11' 1½"
<b>38 x 12</b>	13.092m	12.275m	12.147m	11.847m	3.860m	3.680m	3.390m	3.390m
3 bed / 8 berth	42' 11½"	40' 3¼"	39' 10¼"	38' 10½"	12' 8"	12' 1"	11' 1½"	11' 1½"
<b>38 x 13</b>	13.092m	12.275m	12.147m	11.847m	4.164m	3.984m	3.428m	3.428m
2 bed / 6 berth	42' 11½"	40' 3¼"	39' 10¼"	38' 10½"	13' 9"	13' 1"	11' 3"	11' 3"
<b>40 x 12</b>	13.395m	12.875m	12.645m	12.345m	3.860m	3.680m	3.390m	3.468m
2 bed / 6 berth	43' 11"	42' 3"	41' 6"	40' 6"	12' 8"	12' 1"	11' 1½"	11' 5"
<b>40 x 13</b>	13.395m	12.875m	12.645m	12.345m	4.164m	3.984m	3.508m	3.508m
2 bed / 6 berth	43' 11"	42' 3"	41' 6"	40' 6"	13' 9"	13' 1"	11' 6"	11' 6"
<b>40 x 13</b>	13.459m	12.642m	12.514m	12.214m	4.164m	3.984m	3.428m	3.428m
3 bed / 8 berth	44' 2"	41' 6"	41' 1"	40' 1"	13' 9"	13' 1"	11' 3"	11' 3"
<b>DEBONAIR 10 (Access)</b>								
<b>40 x 12</b>	13.037m	12.377m	12.317m	12.367m	3.860m	3.680m	3.390m	3.390m
2 bed / 6 berth	42' 9"	40' 7"	40' 5"	40' 7"	12' 8"	12' 1"	11' 1½"	11' 1½"
<b>HERITAGE 5</b>								
<b>36 x 12</b>	12.189m	11.507m	11.115m	11.115m	3.860m	3.680m	3.390m	3.390m
2 bed / 6 berth	40' 0"	37' 9¼"	36' 5¾"	36' 5¾"	12' 8"	12' 1"	11' 2"	11' 2"
<b>38 x 12</b>	12.676m	11.994m	11.602m	11.602m	3.860m	3.680m	3.390m	3.390m
2 bed / 6 berth	41' 7"	39' 4"	38' 1"	38' 1"	12' 8"	12' 1"	11' 2"	11' 2"
<b>39 x 12</b>	12.957m	12.437m	11.907m	11.907m	3.860m	3.680m	3.517m	3.517m
2 bed / 6 berth	42' 6"	40' 10"	39' 0"	39' 0"	12' 8"	12' 1"	11' 6"	11' 6"
<b>40 x 12</b>	13.438m	12.756m	12.364m	12.364m	3.860m	3.680m	3.390m	3.390m
3 bed / 8 berth	44' 1¼"	41' 10¼"	40' 6¾"	40' 6¾"	12' 8"	12' 1"	11' 2"	11' 2"
<b>39 x 13</b>	12.957m	12.437m	11.907m	11.907m	4.164m	3.984m	3.558m	3.558m
2 bed / 6 berth	42' 6"	40' 10"	39' 0"	39' 0"	13' 9"	13' 1"	11' 8"	11' 8"

MODEL	L1	L2	L3	L4	W1	W2	H1	H2
<b>SAHARA 3</b>								
<b>32 x 12</b>	10.960m	10.390m	10.061m	9.911m	3.860m	3.680m	3.365m	3.365m
2 bed / 6 berth	35' 11"	34' 1"	33' 0"	32' 6"	12' 8"	12' 0"	11' 0"	11' 0"
<b>36 x 12</b>	12.134m	11.564m	11.234m	11.084m	3.860m	3.680m	3.365m	3.365m
2 bed / 6 berth	39' 10"	37' 11"	36' 10"	36' 4"	12' 8"	12' 0"	11' 0"	11' 0"
<b>38 x 12</b>	12.653m	12.083m	11.753m	11.603m	3.860m	3.680m	3.365m	3.365m
2 bed / 6 berth	41' 6"	39' 8"	38' 7"	38' 1"	12' 8"	12' 0"	11' 0"	11' 0"
<b>39 x 12</b>	13.094m	12.524m	12.194m	12.044m	3.860m	3.680m	3.365m	3.365m
3 bed / 8 berth	42' 11"	41' 1"	40' 0"	39' 6"	12' 8"	12' 0"	11' 0"	11' 0"
<b>CHORUS 7</b>								
<b>32 x 12</b>	10.95m	10.357m	9.900m	9.900m	3.860m	3.680m	3.468m	3.468m
2 bed / 6 berth	35' 11"	34' 0"	32' 6"	32' 6"	12' 8"	12' 1"	11' 5"	11' 5"
<b>36 x 12</b>	11.944m	11.458m	11.160m	10.894m	3.860m	3.680m	3.390m	3.390m
2 bed / 6 berth	39' 2"	37' 6"	36' 7"	35' 8"	12' 8"	12' 1"	11' 2"	11' 2"
<b>39 x 12</b>	13.090m	12.503m	12.022m	12.022m	3.860m	3.680m	3.468m	3.468m
2 bed / 6 berth	42' 11"	41' 0"	39' 5"	39' 5"	12' 8"	12' 1"	11' 5"	11' 5"
<b>40 x 12</b>	13.200m	12.669m	12.321m	12.221m	3.860m	3.680m	3.390m	3.390m
3 bed / berth	43' 3"	41' 5"	40' 4"	40' 0"	12' 8"	12' 1"	11' 2"	11' 2"
<b>MIRAGE 6</b>								
<b>26 x 12</b>	9.126m	8.640m	8.276m	8.076m	3.860m	3.680m	3.365m	3.365m
2 bed / 6 berth	29' 11"	28' 4"	27' 2"	26' 6"	12' 8"	12' 1"	11' 0"	11' 0"
<b>28 x 12</b>	9.630m	9.080m	8.886m	8.686m	3.860m	3.680m	3.390m	3.390m
2 bed / 6 berth	31' 6"	29' 8"	29' 2"	28' 5"	12' 7"	12' 1"	11' 2"	11' 2"
<b>32 x 12</b>	10.850m	10.300m	10.106m	9.906m	3.860m	3.680m	3.390m	3.390m
2 bed / 6 berth	35' 6"	33' 8"	33' 6"	32' 5"	12' 7"	12' 1"	11' 2"	11' 2"
<b>35 x 12</b>	12.095m	11.245m	10.848m	10.818m	3.860m	3.680m	3.390m	3.390m
2 bed / 6 berth	39' 7"	36' 9"	35' 6"	35' 5"	12' 7"	12' 1"	11' 2"	11' 2"
<b>36 x 12</b>	12.524m	11.574m	12.005m	11.275m	3.860m	3.680m	3.390m	3.390m
3 bed / 8 berth	41' 0"	37' 9"	36' 10"	36' 9"	12' 7"	12' 1"	11' 2"	11' 2"
<b>FESTIVAL 5</b>								
<b>28 x 10</b>	9.738m	9.198m	8.988m	8.688m	3.268m	3.068m	3.260m	3.260m
2 bed / 6 berth	31' 11"	30' 2"	29' 6"	28' 6"	10' 9"	10' 0"	10' 8"	10' 8"
<b>32 x 10</b>	10.621m	10.08m	9.871m	9.571m	3.268m	3.068m	3.260m	3.260m
2 bed / 6 berth	34' 10"	33' 0"	32' 5"	31' 5"	10' 9"	10' 0"	10' 8"	10' 8"
<b>36 x 10</b>	12.158m	11.618m	11.408m	11.108m	3.268m	3.068m	3.260m	3.260m
3 bed / 8 berth	39' 11"	38' 1"	37' 5"	36' 5"	10' 9"	10' 0"	10' 8"	10' 8"
<b>28 x 12</b>	9.715m	9.048m	8.865m	8.665m	3.860m	3.680m	3.390m	3.390m
2 bed / 6 berth	31' 10"	29' 8"	29' 1"	28' 5"	12' 7"	12' 1"	11' 2"	11' 2"
<b>35 x 12</b>	11.664m	11.061m	10.888m	10.688m	3.860m	3.680m	3.390m	3.390m
3 bed / 6 berth	38' 3/4"	36' 3/2"	35' 8/4"	35' 1"	12' 7"	12' 1"	11' 2"	11' 2"
<b>36 x 12</b>	12.160m	11.513m	11.330m	11.130m	3.860m	3.680m	3.390m	3.390m
3 bed / 8 berth	39' 10 3/4"	37' 9/4"	37' 2/4"	36' 6/4"	12' 7"	12' 1"	11' 2"	11' 2"

# Bedsizes

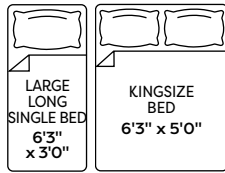
On these pages, all the bed sizes available across the range are listed.

We have gone to great lengths to ensure you can enjoy a good night's sleep.

## IMAGE 10

**41 x 12-6**

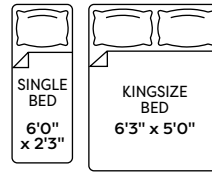
2 bed / 6 berth



## STATUS 6

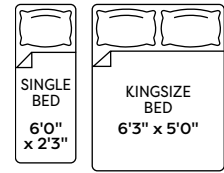
**40 x 12-6**

2 bed / 6 berth



**40 x 12-6**

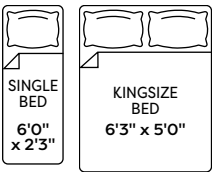
3 bed / 8 berth



## DEBONAIR 10

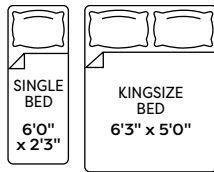
**36 x 12**

2 bed / 6 berth



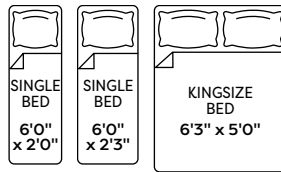
**38 x 12**

2 bed / 6 berth



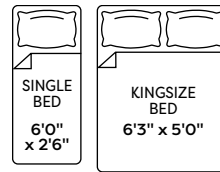
**38 x 12**

3 bed / 8 berth



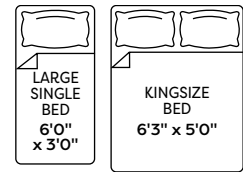
**38 x 13**

2 bed / 6 berth



**40 x 12**

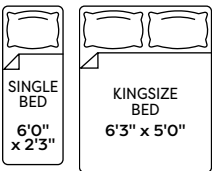
2 bed / 6 berth



## DEBONAIR 10 (Access)

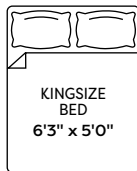
**40 x 12**

2 bed / 6 berth



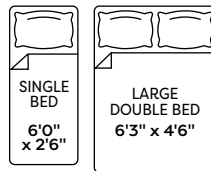
**40 x 13**

2 bed / 6 berth



**40 x 13**

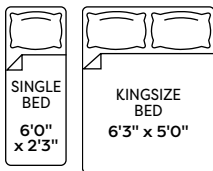
3 bed / 8 berth



## HERITAGE 5

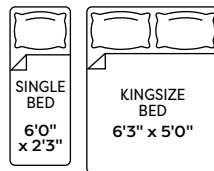
**36 x 12**

2 bed / 6 berth



**38 x 12**

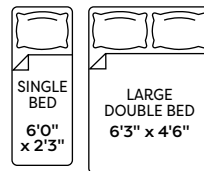
2 bed / 6 berth



## SAHARA 3

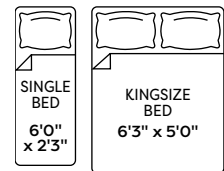
**32 x 12**

2 bed / 6 berth



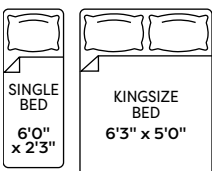
**36 x 12**

2 bed / 6 berth



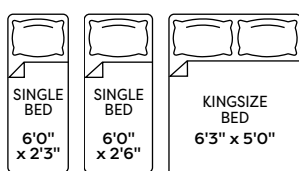
**39 x 12**

2 bed / 6 berth



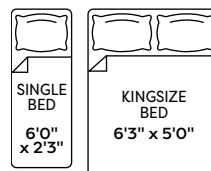
**40 x 12**

3 bed / 8 berth



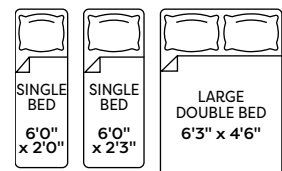
**38 x 12**

2 bed / 6 berth



**39 x 12**

3 bed / 8 berth

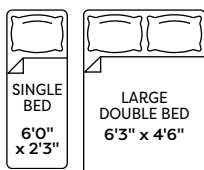




## CHORUS 7

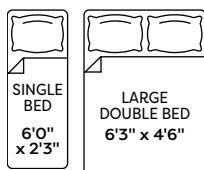
**28 x 12**

2 bed / 6 berth



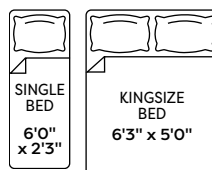
**32 x 12**

2 bed / 6 berth



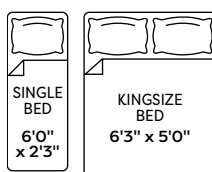
**36 x 12**

2 bed / 6 berth



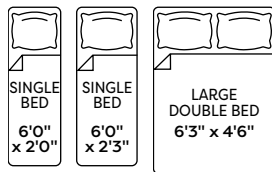
**39 x 12**

2 bed / 6 berth



**40 x 12**

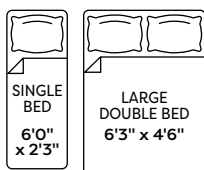
3 bed / berth



## MIRAGE 6

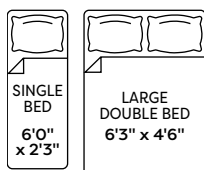
**26 x 12**

2 bed / 6 berth



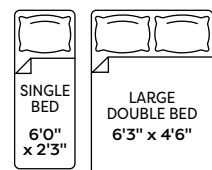
**28 x 12**

2 bed / 6 berth



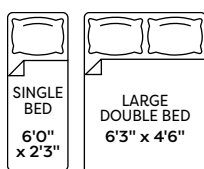
**32 x 12**

2 bed / 6 berth



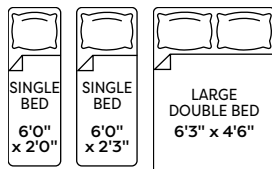
**35 x 12**

2 bed / 6 berth



**36 x 12**

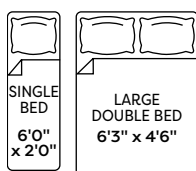
3 bed / 8 berth



## FESTIVAL 5

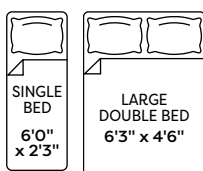
**28 x 10**

2 bed / 6 berth



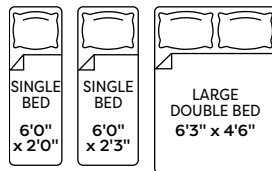
**32 x 10**

2 bed / 6 berth



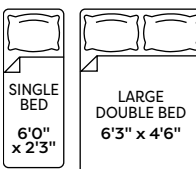
**36 x 10**

3 bed / 8 berth



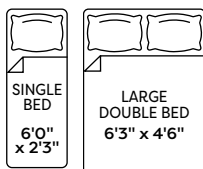
**28 x 12**

2 bed / 6 berth



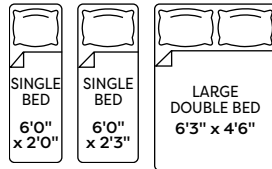
**35 x 12**

3 bed / 6 berth



**36 x 12**

3 bed / 8 berth



# Mattresses

Hand picked range of mattresses for the best night's sleep – ever!



### Atlas Comfort Super Deluxe

9" depth with open coil spring and luxury filling.



### Atlas Comfort Deluxe

8" depth with Bonell spring.



### Atlas Comfort Plus

7.5" depth metal spring.

# Exterior finish options

Whatever the weather may throw at you, we've got you covered.

All Atlas holiday homes are designed with you in mind.

Choosing the right exterior can depend on your location, personal preference or park licence. There are several finishing options available for you to tailor your holiday home to your individual tastes and preferences.

**NOTE:**  
Colour\* indicated (Graphite or White) below holiday home model name is the colour of the windows and doors fitted as standard.

## Aluminium



Champagne    Light Grey    Châteaux Grey    Sandstone    Quarry Grey (ENVIRONMENTAL GREEN)

## Rigid Feather Edge PVC



Stone    Grey    Environmental Green

	Champagne	Light Grey	Châteaux Grey	Sandstone	Quarry Grey (ENVIRONMENTAL GREEN)	Stone	Grey	Environmental Green
<b>IMAGE 10</b> Graphite* windows and doors	NOT AVAILABLE	NOT AVAILABLE	STANDARD	NOT AVAILABLE	OPTIONAL	OPTIONAL	OPTIONAL	OPTIONAL
<b>STATUS 6</b> White* windows and doors	STANDARD	NOT AVAILABLE	NOT AVAILABLE	NOT AVAILABLE	OPTIONAL	OPTIONAL	OPTIONAL	OPTIONAL
<b>DEBONAIR 10</b> White* windows and doors	NOT AVAILABLE	STANDARD	NOT AVAILABLE	NOT AVAILABLE	OPTIONAL	OPTIONAL	OPTIONAL	OPTIONAL
<b>DEBONAIR 10 (ACCESS)</b> White* windows and doors	NOT AVAILABLE	STANDARD	NOT AVAILABLE	NOT AVAILABLE	OPTIONAL	OPTIONAL	OPTIONAL	OPTIONAL
<b>HERITAGE 5</b> White* windows and doors	NOT AVAILABLE	NOT AVAILABLE	STANDARD	NOT AVAILABLE	OPTIONAL	OPTIONAL	OPTIONAL	OPTIONAL
<b>SAHARA 3</b> White* windows and doors	NOT AVAILABLE	NOT AVAILABLE	STANDARD	NOT AVAILABLE	OPTIONAL	OPTIONAL	OPTIONAL	OPTIONAL
<b>CHORUS 7</b> White* windows and doors	NOT AVAILABLE	STANDARD	NOT AVAILABLE	NOT AVAILABLE	OPTIONAL	OPTIONAL	OPTIONAL	OPTIONAL
<b>MIRAGE 6</b> White* windows and doors	STANDARD	NOT AVAILABLE	NOT AVAILABLE	NOT AVAILABLE	OPTIONAL	OPTIONAL	OPTIONAL	OPTIONAL
<b>FESTIVAL 5</b> White* windows and doors	NOT AVAILABLE	NOT AVAILABLE	STANDARD	NOT AVAILABLE	OPTIONAL	OPTIONAL	OPTIONAL	OPTIONAL








# Ultrawarm

Ultrawarm is a combination of high performance insulating materials and construction methods developed by Atlas in partnership with our insulation suppliers. Ultrawarm will further enhance the thermal properties of your Atlas holiday home reducing heating costs and keeping it warmer for longer, ensuring comfort in all weather conditions.

Available as an option on 2024 models, the Ultrawarm insulation package consists of:

-  **150mm 'Smart cavity' roof system** including mineral wool and reflective insulating foil (200mm 'Smart cavity' roof on Lilac Lodge 13, Oakwood Lodge 3 and Wisteria Lodge 4).
-  **60mm mineral wool floor insulation** in Ultrawarm floors.
-  **50mm 'Smart cavity' exterior wall system** including high performance reflective foil faced rigid PUR foam (113mm 'Smart cavity' exterior wall on Lilac Lodge 13, Oakwood Lodge 3 and Wisteria Lodge 4).



## U Values and W/m<sup>2</sup>k

What are 'U' values and what does W/m<sup>2</sup>k mean? A 'U' value is a measure of heat loss. It is expressed in W/m<sup>2</sup>k, and shows the amount of heat lost in watts (W) per square metre (m<sup>2</sup>) of material (for example wall, roof, floor etc.) when the outside temperature, measured in degrees kelvin (k), is at least one degree lower. The lower the 'U' value, the better the insulation, keeping your atlas leisure home warmer for longer and making it cheaper to run.

## Low 'E' Energy Saving Glass

Low 'E' (or low emissivity), Energy Saving Glass is different from normal glass because it has a micro thin transparent metallic coating on one side which is almost invisible. Low 'E', Energy Saving Glass works by reducing the amount of heat lost through glass by reflecting it back into the room rather than allowing it to escape through the glass.

## Argon

Standard double glazing uses two panels of glass fixed a distance apart, this distance or airgap has an insulating effect by reducing the amount of heat that can escape from or the amount of cold that can enter your leisure home. Filling the space with argon gas will make it even more difficult for heat to escape making the double glazed panel significantly more thermally efficient.

## Trace Heating

Available as an option on all 2024 models, Trace Heating is a heating cable fitted inside the external pipe insulation and activates when the temperature falls below 5°C†. Trace Heating can operate in conditions down to -20°C† helping to safeguard your holiday home against damage caused by freezing pipes. Trace Heating cannot overheat, is maintenance free and has very low running costs.

**NOTE:** Trace Heating requires a continuous power supply, check with your Park Operator to ensure electricity will be available over winter periods and when your Park is closed.

KEY: † Manufacturers figures and recommendations.



## BS3632:2015

### Residential Specification

**bsi.**

The following Atlas Leisure Homes' models can be constructed to meet the current BS3632:2015 Standard:

Lilac Lodge 13	All of range*
Oakwood Lodge 3	All of range*
Wisteria Lodge 4	All of range*
Jasmine Lodge 3	All of range*

Sherwood Lodge 8 and Debonair Lodge 5 are built to BS3632:2015 Residential Specification as standard.

KEY: \* An upgraded exterior is required with selected BS3632:2015 option.

Performance Increase (Typical)	Mirage
<b>Standard insulation</b> average 'U' value	1.77 W/m <sup>2</sup> k
<b>Extra insulation</b> average 'U' value*	0.91 W/m <sup>2</sup> k
<b>Extra insulation</b> % improvement on standard insulation	<b>48.60%</b>
<b>Ultrawarm</b> insulation average 'U' value**	0.58 W/m <sup>2</sup> k
<b>Ultrawarm</b> % improvement on standard insulation	<b>67.20%</b>

A '**Low E**' energy efficient glass upgrade is available which will enhance thermal performance.

An **Argon filled 'Low E'** energy efficient glass upgrade is available which will further enhance thermal performance.

**Please contact Atlas for further details.**

### KEY:

\* Calculations based on a leisure home with Extra Insulation and standard air filled double glazing.

\*\* Calculations based on a holiday home with Ultrawarm insulation and standard air filled double glazing.

# Comprehensive warranty



## Total peace of mind with a comprehensive manufacturers warranty

Our holiday homes and lodges are built to last, but we know that sometimes things can go wrong, defects arise or components fail. With all Atlas holiday homes, you can relax in the knowledge that in the unlikely event of one of these occurring, our warranty is there to protect you.

Terms and conditions apply. See the handbook supplied with your holiday home or lodge for details.



### 1 YEAR PARTS & LABOUR

All brand new holiday homes and lodges come with a 12 month parts and labour warranty covering everything inside your new purchase.



### 3 YEAR ADDITIONAL

In addition to the standard 12 month warranty, the following are covered for 2 additional years.

- Furniture manufactured and fitted by Atlas
- Shower cubicle, baths, kitchen sink, taps and sanitaryware
- Internal doors, door handles, radiators, sockets and switches
- Gutters, downpipes and cladding
- Dining table and chairs.



### 5 YEAR STRUCTURAL

After the 12 month standard parts and labour warranty, the chassis, roof, walls, floors, ceilings and external doors and windows are covered for an additional 48 months.



### 10 YEAR GALVANISED CHASSIS

If you have chosen one of our models with a fully galvanised chassis then you benefit from a 10 year warranty from the date of purchase.

# Main dealerships

## 1 Scotland

Please see our website for a large selection of holiday home parks across Scotland stocking selected Atlas models.

## 2 North West

### Lake Coast and Dale

Scotland Rd,  
Carnforth,  
Lancashire, LA5 9RF  
Tel: 01524 727950  
lakecoastanddale.co.uk

### SGM Caravan Sales

High Hesket Business Park,  
High Hesket,  
Carlisle CA4 0JE  
Tel: 01697 475999  
sgmcaravansales.com

## 3 North East

### Bridlington Caravan Centre

Bessingby Way,  
Bridlington,  
East Riding of Yorkshire,  
YO16 4SJ  
Tel: 01262 606777  
bridlingtoncaravans.com

### The Holiday Home Centre

Beverley Road,  
Beeford,  
East Riding of Yorkshire,  
YO25 8AD  
Tel: 01262 481210  
theholidayhomecentre.com

### Yorkshire Holiday Homes

Unit 154, Thorp Arch Estate,  
Wetherby,  
West Yorkshire,  
LS23 7BJ  
Tel: 01937 849128  
bridlingtoncaravans.com

## 4 Central England

### Salop Leisure Ltd

Emstrey,  
Shrewsbury,  
Shropshire,  
SY5 6QS  
Tel: 01743 617607  
salopleisure.co.uk

### Salop Leisure Ltd

Nelson Road,  
Sandy Lane Industrial  
Estate, Stourport on Severn,  
Worcestershire, DY13 9QB  
Tel: 0844 2471836  
salopleisure.co.uk

## 5 East of England

### Kingfisher

Sea Lane, Ingoldmells,  
Skegness, Lincolnshire, PE25 1PG  
Tel: 01507 613018  
kingfishercaravanpark.co.uk

### Next Phase Leisure

Woodland Holiday Park  
Trimingham  
NR11 8QJ  
Tel: 03300 552178  
nextphaseleisure.co.uk

### UK Caravan Centre

2 The Gatehouse,  
Billericay, Essex,  
CM12 9SB  
Tel: 0800 246 1206  
ukcaravancentre.co.uk

## 6 South West

### Surf Bay Leisure – Devon

The Airfield, Winkleigh,  
Devon, EX19 8DW  
Tel: 01837 68010  
surfbayleisure.co.uk

### Surf Bay Leisure – Dorset

St Andrews Industrial Estate,  
Shoe Lane, Bridport,  
Dorset, DT6 3EX  
Tel: 01308 427444  
surfbayleisure.co.uk

### Surf Bay Leisure – Somerset

Weston Road, Brean,  
Somerset, TA8 2RP  
Tel: 01278 751171  
surfbayleisure.co.uk

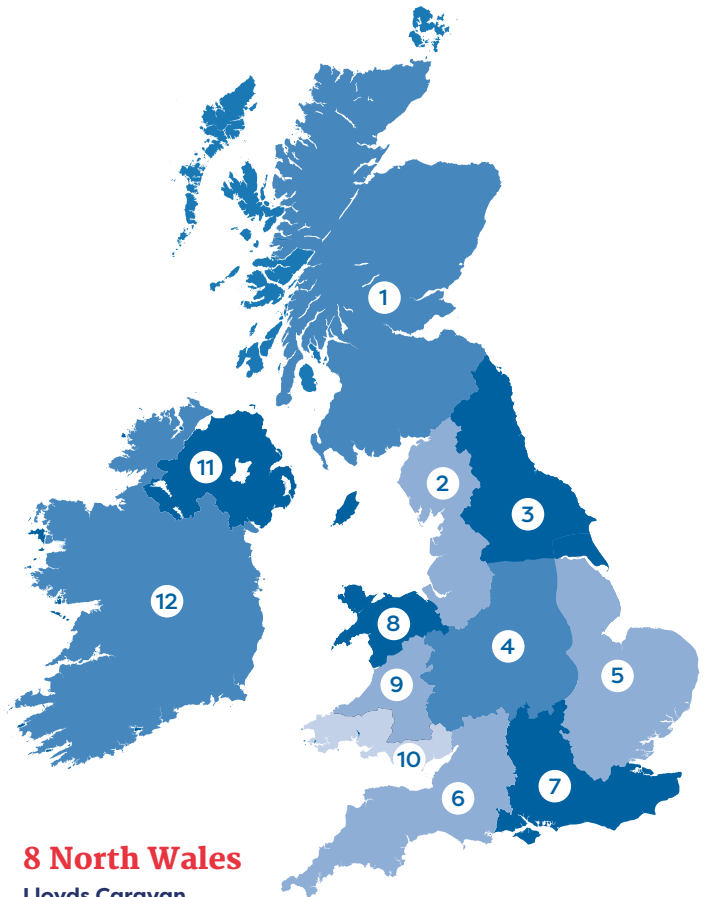
## 7 South East

### Static Trader

The Caravan Storage,  
Harbour Road, Rye, TN31 7TE  
Tel: 01797 222 333  
statictrader.com

### Surf Bay Leisure Ltd

Sussex and Kent  
Tel: 01308 427444  
surfbayleisure.co.uk



## 8 North Wales

### Lloyds Caravan & Lodge Sales

Towyn Road,  
Towyn,  
Abergele,  
North Wales,  
LL22 9NW  
Tel: 01745 832 050  
lloydsacaravans.co.uk

### Mon Caravans

Amlwch,  
Anglesey, LL68 9TG  
Tel: 01407 831138  
moncaravans.com

### Mon Caravans

Caergeillilog,  
Anglesey, LL65 4YH  
Tel: 01407 742288  
moncaravans.com

### Mon Caravans

Menai Bridge,  
Anglesey, LL59 5RW  
Tel: 01248 711070  
moncaravans.com

## 9 Mid Wales

### Salop Leisure Ltd

Treowain Enterprise Park,  
Machynlleth,  
SY20 8EG  
Tel: 0844 2471841  
salopleisure.co.uk

## 10 South Wales

### Broughton Leisure

Yerbeston Gate,  
Narberth,  
Pembrokeshire  
SA68 0NY  
Tel: 01834 891444  
broughtonleisure.co.uk

## 11 Northern Ireland

### Sandycove Holiday Homes

191 Whitechurch Rd,  
Ballywalter,  
Newtownards,  
Ards, BT22 2JZ  
Tel: 028 4275 8200  
sandycove.co.uk

## 12 Ireland

### Cunninghams

Ennis Road, Limerick, Ireland  
Tel: 00 353 61 451 009  
cunninghams.ie

### Harry Farrell & Sons Limited

Tay Lane, Rathcoole,  
Dublin, Ireland  
Tel: 00 353 14 589 410  
harryfarrellsons.ie

### Johnstons Caravans

Dromore, Letterkenny,  
Co. Donegal, Ireland  
Tel: 00 353 74 912 2496  
johnstonscaravans.ie

### Nationwide O'Connor

Rathdowney Caravan Park,  
Ballyhote,  
Rathdowney,  
Y35 KP23, Ireland  
Tel: 00 353 53 910 8043  
nationwidemobilehomes.ie

### Smyth Leisure

Moneycarroll,  
Newtownmountkennedy,  
Co. Wicklow, A63 WP94  
Ireland  
Tel: 00 353 12 011 095  
smythleisure.com



# Frequently asked questions

## Where is my serial number and why do I need it?

Your unique serial number always begins with ATO followed by a sequence of numbers and can be found on your boiler and on the rear exterior panel of your holiday home. This number is like a car registration and is used to identify your model when your park or dealer contacts Atlas or purchases any spare or additional product for your holiday home for example.

## Who do I go to with any concerns or faults about my holiday home?

In the first instance, please report any issues to your park or dealer who will then have a representative contact the Atlas warranty and aftersales team on your behalf.

## Can I live in my Atlas holiday home or lodge?

A home built to EN 1647 is not suitable for living in. Homes built to this standard are only suitable for seasonal accommodation. However, a holiday home built to BS 3632 residential specification is suitable for year-round living, but this is dependent on the licence and rules of the park that your holiday home is sited on. Please speak to your park to confirm this.

## Can I buy my Atlas holiday home direct?

We do not sell direct, to buy an Atlas holiday home or lodge you must purchase through a park or dealership.

## Are static homes pet friendly?

Yes, all our holiday homes and lodges are pet friendly, however you should check with your park to ensure that they allow pets on site.

## How do I go about purchasing my lodge or holiday home?

To ensure that you are getting the most from your purchasing experience, first browse our selection of holiday homes and lodges in our brochure and on our website, and then decide on the location you would like your home to be sited. You will then be able to search for local dealerships or parks in the area and begin the process with them directly.

## What warranty do you offer and how do I register this?

Our warranty will cover the first 12 calendar months from the handover date of your new holiday home on all items within your holiday home or lodge. To register your warranty, as soon as you take ownership, your park or distributor should register your new home to activate the warranty. We'd recommend you completing these details too.

## T&C

All photography and images are for illustration and presentation purposes only. The manufacturer reserves the right to vary the specification with or without notice, and at such times and in a manner deemed necessary. Major as well as minor changes may take effect in accordance with supplier changes and our policy of constant development and improvement.

Atlas reserves the right to change any materials, fittings, etc., shown in this brochure at any time and without prior notice as supply or product development demand. All Atlas Leisure Homes are built to comply with all relevant British Standards and Codes of Practice as required by the National Caravan Council certification scheme.

NOTE: Caravan Holiday Homes are not designed for residential occupancy. To use an Atlas Leisure Home, it will need to be correctly sited, have steps or other means of entry and be connected to services (an appropriate propane gas supply, mains electricity to suit the required power offtake, mains water at a pressure to suit the appliances and a waste water/sewage outlet). Due to the nature of our construction methods and practices, it may not always be possible to match patterns precisely on some wallboards and fabrics. Any Park Operator, anywhere in the UK, can purchase an Atlas Leisure Home for you through the Atlas Dealer/Park Distribution Network.

Due to the limitation of the print process we recommend that you see the actual products for colours. Photographs of Atlas Leisure Homes on location are for example only and may not have been sited at that location. Decking, patios, fences, barbecues, etc. have been used for illustrative purposes only. E&OE.

If you invest in an Atlas Leisure Home, you can be confident that not only do you own the best in design, innovation and value for money but have also made a contribution to environmental sustainability.

H2/1121/4K

If you have any questions on our range,  
please contact your preferred stockist

Your Atlas Stockist

[atlasleisurehomes.co.uk](http://atlasleisurehomes.co.uk)

Check out our new website to find out more about the Atlas range of leisure homes, and wider business.



Say hello :)



 **Please recycle!**

When you've chosen your dream holiday home, please pass this brochure on to a friend or recycle it.



**Atlas Leisure Homes Limited**  
Wiltshire Road,  
Hull HU4 6PD

Tel: 01482 562101  
Fax: 01482 566033



**ncc**

**ATLAS**  
LEISURE HOMES

